



---

**STOCK PARTS  
CATALOG**

---

Shipping within 24 hours

---

**(888) 999-5278**

---

**[www.PRTlids.com](http://www.PRTlids.com)**

---

Version 1.2

## Our Mission

*Best-in-Class Products  
with Best-in-Class Service*



*PRT's products are designed to be problem solvers.*

*We listen to you and implement your feedback to continually lead the way in innovation of replacement parts in this industry. Our products are engineered to last and we focus on efficiency in our manufacturing process in order to keep your cost low. We provide the highest quality parts with exceptional service that keeps you coming back.*

*We truly appreciate our customers.*

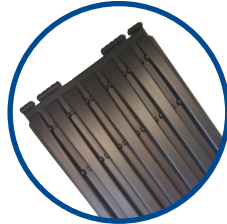
*Thank you for over 25 years of partnership and trust!*



At PRT, the Customer is our most important part.

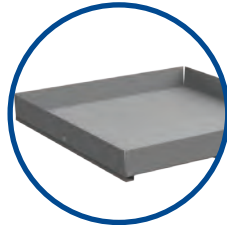
—Kevin Gavin, President & CEO

## Contents



### Container Lids

3



### Replacement Bottoms

9



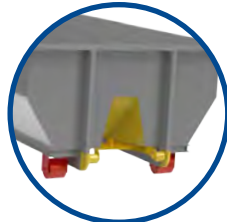
### Compactor Parts

14



### Container Parts

55



### Roll-Off Parts

65



### Roll-Off Hoist Parts

69

# Here for you

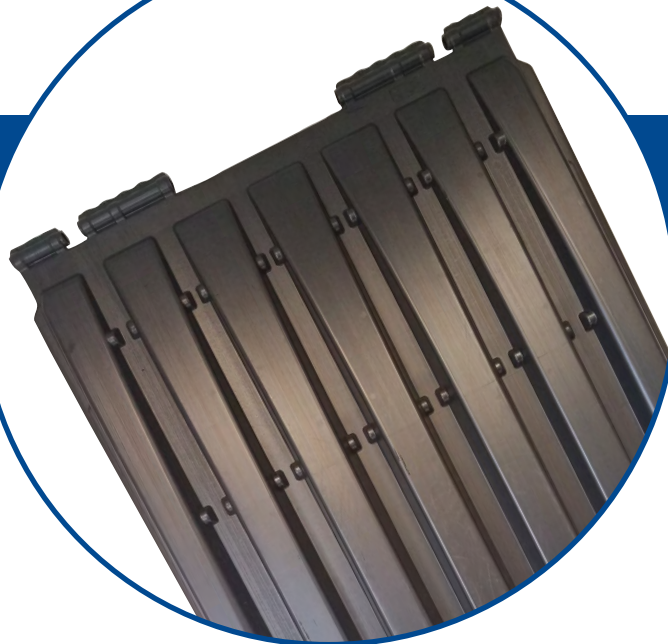
Download our new mobile app.



- *Order parts*
- *Track your inventory*
- *We make it easy to do business with PRT*







## Container Lids

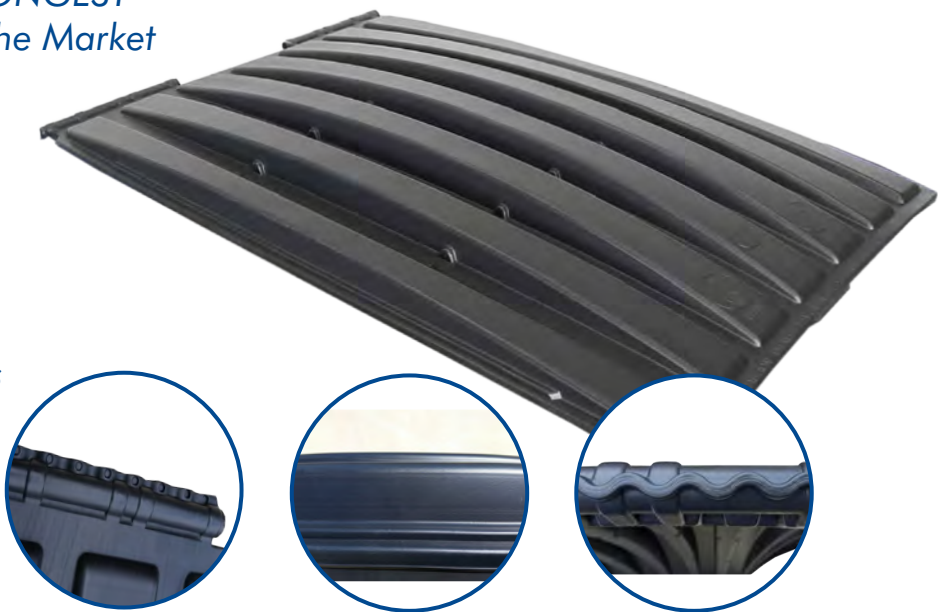
*Over 25 years ago, PRT was born with an innovative idea on how to develop a stronger and higher quality container lid. It was our first product. That passion is still in every product we sell. We listen first and look for solutions second. Our lids are made from the highest quality material and they are manufactured in the smartest, most efficient way that keeps costs low. We pass those savings on to you.*



# "S" Series Front Load Lid

The "S" Series Lid is the **STRONGEST** Front and Rear Load Lid on the Market

- Patented Hinge Line
- Higher Rib Profile
- Boxlike Structure
- ANSI Compliant
- 10 Year Warranty, 5 years longer than the "D" Series Lid



All "S" Series lids have double-walled hinges and seamless knuckles that hold up to 2,000 pounds each.

Additional height added to the rib—exceeds 2 times the ANSI load bearing requirement.

This lid design offers flexibility to protect from lid crushing and prevents pretzeled hinge rods and cracked hinge knuckles.

**FULL SKIDS  
OF LIDS  
SHIP FREE**

We make it easy!

Stock "S" Series Front Load Lid Sizes

| LID W x L | ITEM CODE | FITS CONTAINER | SOLD       |
|-----------|-----------|----------------|------------|
| 36" X 30" | L.S.30.B  | 1, 1.5 YD      | 100/pallet |
| 36" X 33" | L.S.33.B  | 1, 1.5 YD      | 100/pallet |
| 36" x 36" | L.S.36.B  | 1, 1.5 YD      | 100/pallet |
| 36" x 41" | L.S.41.B  | 2 YD           | 100/pallet |
| 36" X 46" | L.S.46.B  | 3, 4 YD        | 100/pallet |
| 36" X 47" | L.S.47.B  | 3, 4 YD        | 100/pallet |
| 36" X 48" | L.S.48.B  | 3, 4 YD        | 100/pallet |
| 36" x 55" | L.S.55.B  | 6, 8 YD        | 100/pallet |
| 36" x 58" | L.S.58.B  | 6, 8 YD        | 100/pallet |

Common in the Southeast Region

**Quick tip!**

**Southeast Hinge Line Option**

Leaves 1" gap for hinge ear set 4-5" from outer channel.

Stock "S" Series Front Load Lid Sizes w/Southeast Hinge Line

| LID W x L            | ITEM CODE   | FITS CONTAINER | SOLD       |
|----------------------|-------------|----------------|------------|
| 36" X 41" W/SE HINGE | L.S.41.B.SE | 2 YD           | 100/pallet |
| 36" X 48" W/SE HINGE | L.S.48.B.SE | 3, 4 YD        | 100/pallet |
| 36" x 58" W/SE HINGE | L.S.58.B.SE | 6, 8 YD        | 100/pallet |

Yellow lids available. Other colors upon request.

# "S" Series Rear Load Lid



**FULL SKIDS  
OF LIDS  
SHIP FREE**

We make it easy!

## Specialty Hinge Line Lays Flat

PRT lids are designed with fully stacked hinges. This means that we use twice the material as our competitors on each hinge. Our hinge material is also interlocked—created like door hinges—to be stronger.

Our rear load lid is designed to allow for hinge movement and lay flat behind the container, preventing damage.

### Stock "S" Series Rear Load Lid Sizes

| LID W x L | ITEM CODE  | SOLD       |
|-----------|------------|------------|
| 31" x 31" | L.S.3131.B | 100/pallet |
| 31" x 37" | L.S.3137.B | 100/pallet |
| 31" x 39" | L.S.3139.B | 100/pallet |
| 31" x 41" | L.S.3141.B | 100/pallet |
| 31" X 43" | L.S.3143.B | 100/pallet |
| 31" X 44" | L.S.3144.B | 100/pallet |
| 31" x 45" | L.S.3145.B | 100/pallet |
| 31" x 48" | L.S.3148.B | 100/pallet |
| 31" x 50" | L.S.3150.B | 100/pallet |
| 31" x 52" | L.S.3152.B | 100/pallet |
| 31" x 56" | L.S.3156.B | 100/pallet |
| 31" x 58" | L.S.3158.B | 100/pallet |

# "D" Series Front and Rear Load Lids

## "D" Series Lid key features

- Double wall frame
- Lids stamped with date, part number and mold number
- ANSI Safety and Warning protects customer
- 5-year warranty



## Stock "D" Lid Front Load Sizes

| LID W x L | ITEM CODE | FITS CONTAINER | SOLD       |
|-----------|-----------|----------------|------------|
| 36" X 30" | L.D.30.B  | 1, 1.5 YD      | 120/pallet |
| 36" X 33" | L.D.33.B  | 2 YD           | 120/pallet |
| 36" X 36" | L.D.36.B  | 2 YD           | 120/pallet |
| 36" X 38" | L.D.38.B  | 2 YD           | 120/pallet |
| 36" X 41" | L.D.41.B* | 2 YD           | 120/pallet |
| 36" X 46" | L.D.46.B  | 3, 4 YD        | 120/pallet |
| 36" X 48" | L.D.48.B* | 3, 4, 6 YD     | 120/pallet |
| 36" X 51" | L.D.51.B  | 3, 4 YD        | 120/pallet |
| 36" X 55" | L.D.55.B  | 6, 8 YD        | 120/pallet |
| 36" X 58" | L.D.58.B* | 6, 8 YD        | 120/pallet |

\*  Blue lids available. Other colors upon request.

## Stock "D" Lid Rear Load Sizes

| LID W x L              | ITEM CODE  | SOLD       |
|------------------------|------------|------------|
| 3131 REAR LOAD "D" LID | L.D.3131.B | 120/pallet |
| 3141 REAR LOAD "D" LID | L.D.3141.B | 120/pallet |
| 3143 REAR LOAD "D" LID | L.D.3143.B | 120/pallet |
| 3145 REAR LOAD "D" LID | L.D.3145.B | 120/pallet |
| 3150 REAR LOAD "D" LID | L.D.3150.B | 120/pallet |
| 3152 REAR LOAD "D" LID | L.D.3152.B | 120/pallet |

**FULL SKIDS  
OF LIDS  
SHIP FREE**

We make it easy!

# Double Wall Lids

## Double Wall Lid key features

- True double wall lid
- SE hinge line fits containers in the southeast and also allows for variances in hinge ear placement in other regions.
- All OEM and Aftermarket ready
- Highest rib profile double wall lid in the industry, creating greatest load bearing capacity.
- Drain holes near hinge line prevents water entrapment, therefore no cracked hinge lines.
- 5 year warranty



## Stock Double Wall Lid Sizes

| LID W x L                 | ITEM CODE | SOLD       |
|---------------------------|-----------|------------|
| 36" X 41" DOUBLE WALL LID | L.DW.41.B | 100/pallet |
| 36" X 48" DOUBLE WALL LID | L.DW.48.B | 100/pallet |
| 36" X 58" DOUBLE WALL LID | L.DW.58.B | 100/pallet |



## Specialty Lids



## Side Door

- Handle slots for ease of use
- ANSI Warning label included on door center.

### Lid Sizes Available

| LID W x L | ITEM CODE |
|-----------|-----------|
| 30" X 30" | L.3030    |



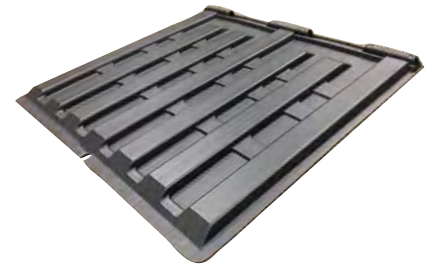
## Universal Lid

- Can be cut down to any length

### Lid Sizes Available

| LID W x L | ITEM CODE    |
|-----------|--------------|
| 31" X 45" | L.UNI.3145.B |

 Yellow lids available.



## Side Load

- Can be cut down to any length

### Lid Sizes Available

| LID W x L | ITEM CODE   |
|-----------|-------------|
| 30" x 27" | L.SL.3027.B |
| 30" x 42" | L.SL.3042.B |
| 30" x 43" | L.SL.3043.B |



## Front Load Commingle Recycling Lid

- Scoop opening
- Extra support eliminates sagging

### Lid Sizes Available

| LID W x L | ITEM CODE    |
|-----------|--------------|
| 36" X 58" | L.REC.3658.B |

 Yellow lids available.



## Front Load Cardboard Recycling Lid

- 4½" slotted opening for easy cardboard insertion
- Includes an easy-install support rod (with instructions) for added strength.

### Lid Sizes Available

| LID W x L             | ITEM CODE    |
|-----------------------|--------------|
| 74" X 58"             | L.REC.7458.B |
| Support Rod-No Charge | P.HR.REC.74  |

 Yellow lids available.



## ***Replacement Bottoms***

*At PRT, we build our own bottoms.  
We manufacture and distribute from our  
own facility. This allows us to fully control  
quality and eliminate delays. All stock  
bottoms ship within 24 hours.*

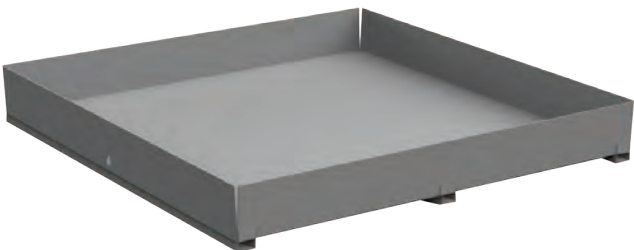


# Replacement Bottoms

*Extend the life of your containers! Replacing containers can be costly and replacing bottoms is time consuming. PRT's bottoms are made to last, keeping repairs to a minimum.*

Our replacement bottom key features

- High quality; Made in the USA
- Heavy-duty 11 gauge steel for strength and durability
- 4 way bend versus welded risers provides longevity
- 6" riser
- Rails versus foot pads spread the force evenly once container is lowered back to ground after dumping
- Technical support to assist in installation techniques
- Stock bottom sizes ship within 24 hours



Stock Bottoms

| ITEM DESCRIPTION   | ITEM CODE | FITS CONTAINER |
|--------------------|-----------|----------------|
| 72.5" x 36" BOTTOM | B.7236    | 2 YD           |
| 72.5" x 54" BOTTOM | B.7254    | 4 YD           |
| 72.5" x 66" BOTTOM | B.7266    | 6 YD           |
| 72.5" x 72" BOTTOM | B.7272    | 6, 8 YD        |
| 72.5" x 80" BOTTOM | B.7280    | 8, 10 YD       |

NOTE: All Stock Bottoms come with 1.5" drain flange and three bottom non-capped rails (6 YD and above). PRT is currently moving to a universal two rail capped design. Please inquire about the benefits.

## Why Buy Replacement Bottoms?

- Reduce Repair Times
- Cut Overall Maintenance Costs
- Keep up with Container Demand

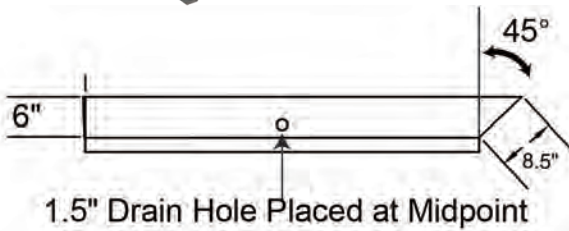
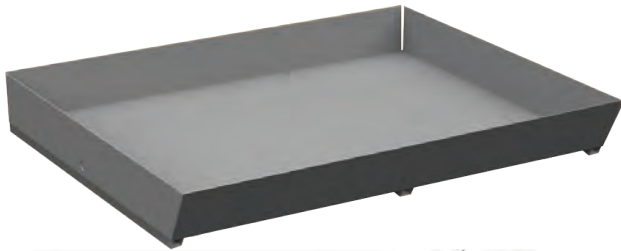
PRT has helped many shops convert to replacement bottoms after timed trials prove a reduction in both time and repair cost. Call us today if you want training on the installation process or testimonials from shops who have converted to Replacement Bottoms.

## Customization options available!

Stock sizes shown.  
Call today or visit our webstore to build your own custom bottom. Minimum order required.



# Replacement Bottoms



## Stock Slant Bottoms

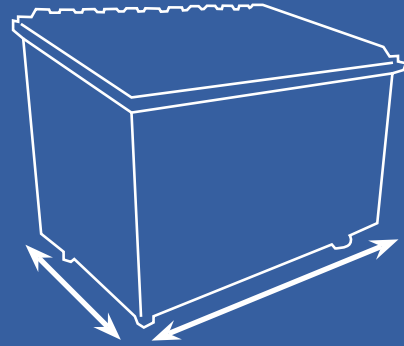
| ITEM DESCRIPTION         | ITEM CODE | FITS CONTAINER |
|--------------------------|-----------|----------------|
| 72.5" x 54" BOTTOM SLANT | B.7254.S  | 8 YD           |



## How to install a pre-fab bottom

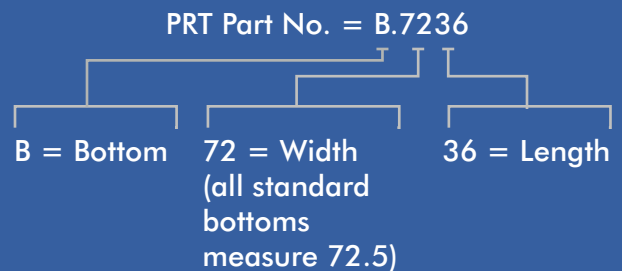
1. Place prepped container into new pre-fab bottom
2. Tack weld corners of prefab bottom to container wall—fix bottom to prevent shifting
3. Complete tack welding every 8-10"
4. Weld solid
5. Grind tack marks flush to container wall

## How to Measure a Container When Ordering a Replacement Bottom



- Measure at the BASE of the container
- Round UP to the nearest 1/2" in length (DO NOT EXCEED 1")
- Match to the desired PRT part number

## How to Read PRT Bottom Part Numbers



## How to Achieve Standardization

Example 1  
 $71\text{-}3/8" \times 71\text{-}3/4" = 72.5" \times 72"$   
 when rounded up

Example 2  
 $71\text{-}1/8" \times 65\text{-}1/2" = 72.5" \times 66"$   
 when rounded up

## Bottom Installation Tools



### Bottom Kit

- Helps align bottom and container
- Includes 1 pry bar, 12 shoe horn brackets, and 1 cross bar



### Prybar

- Helps align bottom and container
- Prybar only



### Shoe Bracket

- For bottom installation kit



### Bottoms Fork Lift Adapter

- Affordable quick way to safely lift and move front load cans.
- 1,500-2,000 load bearing
- Safety chain included

## PRT Pre-Fab Bottom Worksheet

## All Stock Bottoms Ship within 24 Hours

Our stock bottoms are universal solutions that fit the most common containers. Stock bottoms are listed on pages 10 & 11. All stock bottoms are built with 11 gauge steel, 6" risers and 1.5" drain flange. Bottom sizes 6YD and above have three uncapped rails and sizes below 6YD have two uncapped rails. We are happy to help you transition into our stock sizes.

*If our stock sizes do not work for you, we can customize a bottom to your specifications with longer lead time. Please complete the worksheet to get started.*

## Build to Suit

# Rails

- ☐ None      ☐ 2  
☐ Capped      ☐ Custom Rails:  $\frac{\quad}{w}$  x  $\frac{\quad}{h}$   
☐ Other \_\_\_\_\_  
*please specify*

## Risers

- ☐ 4"      ☐ 8"  
☐ 10"    ☐ 12"

## Gauges

- ☐ 10      ☐ 12"
- ☐ Other \_\_\_\_\_  
*please specify*

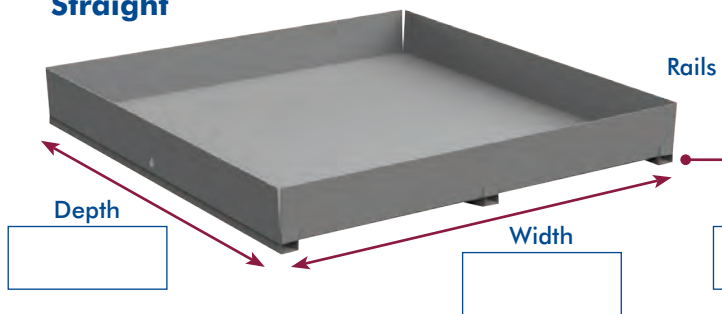
## Drain Flange

- ☐
- No

## Drain Plug

- ☐
- Foam
- ☐
- Plastic

## Straight



## Slant



**Company Name** \_\_\_\_\_

**Contact Name**

**Phone Number**

Email

**Quantity Needed** \_\_\_\_\_

**PRT USE ONLY**

Price: \_\_\_\_\_

Part #:

Date: \_\_\_\_\_

**Call, email or fax for pricing**

(CS@PRTLids.com or Fax 847.860.8811)



# Compactor Parts

*Our selection of quality compactor parts is unmatched in price and ships in 24 hours. Our live technical support is here for you. We can help you find the right part or troubleshoot your equipment. By listening to our customers we have developed universal solutions to keep your equipment running for years.*



# Universal Compactor Power Unit

One power unit to drive any OEM compactor. Built with the highest quality parts and backed by our impressive 2-year warranty.\*

Our Universal Power Unit comes equipped with:

- UL Approved NEMA 4 Panel
- 30MM Pendant Control with Allen Bradley Controls
- PLC Pre-programmed with Standard Features
- 3-Phase, 10 HP Motor
- 12 GPM Pump
- Directional Valve with Soft Shift Control
- Runs Pressure and By-Pass Cylinders
- 30 Gallon Tank – Sits 6" Off Ground
- Hydraulic Strainer on Fill Nozzle Eliminates Contamination
- 100% Full Light
- Low Oil Shut-Down with Warning Light

2 year warranty



Customer satisfaction guaranteed

Our power units are built in-house and tested to pass strict quality standards before being shipped to you.

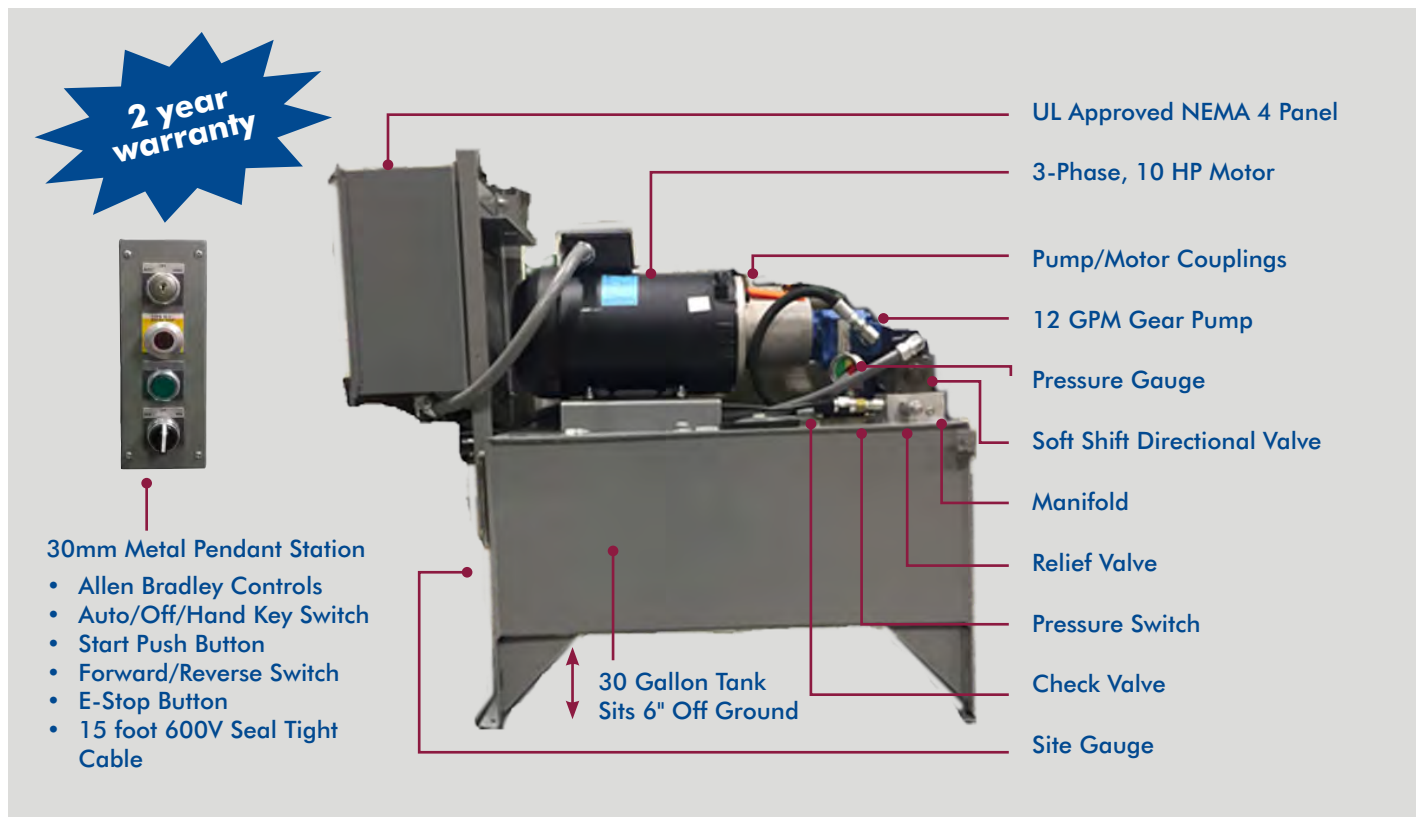
Our most popular power units, ready to ship!

| ITEM DESCRIPTION   | ITEM CODE        |
|--|------------------|
| UNIVERSAL POWER UNIT, 3 PH 10 HP W/15' CNTRLS              | A.PUX.LC.3.10    |
| SINGLE PHASE POWER UNIT, 1 PH 10 HP W/15' CNTRLS           | A.PUX.LC.1.10    |
| PACKER TIPPER POWER UNIT, 3 PH 10 HP PACK TIP W/15' CNTRLS | A.PUX.LC.3.10PT2 |

\* 2 year warranty includes labor cost as outlined in Warranty Agreement.

# Universal Compactor Power Unit Customization

*Stock Universal Assembly (Runs all Compactors)*



*Available added PLC features*

| ITEM DESCRIPTION                              | ITEM CODE           |
|---|---------------------|
| DRIVER STATION CONTROL                        | A.CTRL.DRLC         |
| OIL HEATER W/RELAY                            | A.PU.ACC.OH.230/460 |
| OIL HEATER                                    | A.PU.ACC.OH.230/460 |
| ADVANCED WARNING                              | A.PU.ACC.LC.F6      |
| PHOTO EYE                                     | A.PU.ACC.LC.F7      |
| LIMIT SWITCH                                  | A.PU.ACC.LC.F8      |
| SAFETY SWITCH                                 | A.PU.ACC.SS.ELE     |
| 6 PIN 10' SAFETY SWITCH ELECTRICAL DISCONNECT | A.PU.ACC.SS.6P      |
| EXTRA CABLE FOR 6 PIN SAFETY SWITCH           | A.PU.ACC.SS.6PE     |
| MAGNETIC SAFETY SWITCH                        | A.PU.ACC.SS.MAG     |
| EXTRA CABLE – SOLD BY THE FOOT                | A.PUX.ACC.EW        |



**FREE Live Technical Support Available**

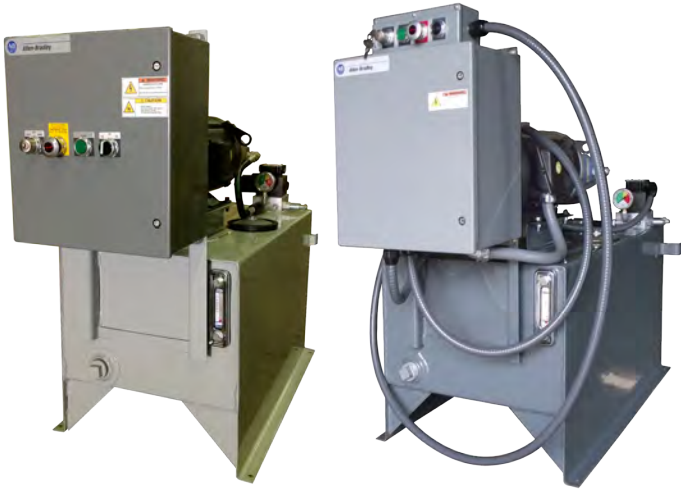
Here for you—answers when you need them.

**Didn't find what you're looking for?**

*PRT can build any customized Power Unit to meet your specific needs. See worksheet page on the right.*

# Build Your Own Universal Power Unit

## (Complete Customization Worksheet Below)



### Stock Control Buttons

#### PLC Buttons Include:

- 30MM Auto/Off/Hand Key Switch
- 30MM Start Push Button (Green)
- 30MM Forward/Reverse Spring Loaded Manual Switch
- 30MM E-Stop Push Button (Red)

#### Cycon Board Buttons Include:

- 30MM Start Push Key Switch
- 30MM Reverse Push Button (Black)
- 30MM E-Stop Push Button (Red)

### Customization Options

#### Power Unit Control Panel

- ☐ PLC Control Panel (Standard)
- ☐ Cycon Control Panel

#### System Power Supply

- Phase: ☐ Single      Voltage: ☐ 208V  
☐ Three (Standard)      ☐ 230V  
☐ 480V

#### Horsepower

- ☐ 5 HP      ☐ 10 HP (Standard)
- ☐ 15 HP      ☐ 20 HP

#### Optional Features

- ☐ Container Full (PLC Standard)
- ☐ Multi-Cycle (PLC Standard)
- ☐ Frequency Drive
- ☐ Advanced Warning
- ☐ Safety Door Switch
  - ☐ Magnet
  - ☐ Key Style
- ☐ Magnetic Door Switch w/Counter Starter
- ☐ Photo-Eye Switch
- ☐ Oil Heater      ☐ 230V      ☐ 480V
- ☐ Pressure Gauge Hose (standard 20')  
Custom Length: \_\_\_\_\_
- ☐ Hydraulic Hose      Custom Length: \_\_\_\_\_
- ☐ Quick Couplers
- ☐ Other: \_\_\_\_\_  
*please specify*

#### Optional Pendant Controls

- ☐ Custom Whip Length (standard 15'): \_\_\_\_\_

Company Name \_\_\_\_\_

Contact Name \_\_\_\_\_

Phone Number \_\_\_\_\_

Email \_\_\_\_\_

Quantity Needed \_\_\_\_\_

#### PRT USE ONLY

Price: \_\_\_\_\_

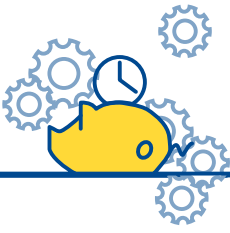
Part #: \_\_\_\_\_

Date: \_\_\_\_\_

**Call, email or fax for pricing**

(CS@PRTLids.com or Fax 847.860.8811)

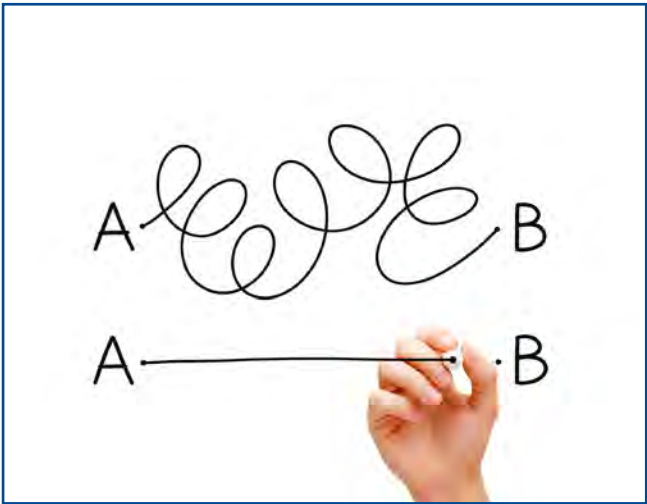




# Quick Guides

*...because Time is Money*

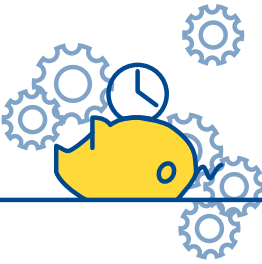
## Want help fast?



*We know you're busy. Our quick replacement part guides save time by helping you find the right part, and get on with your day.*

*We ship within 24 hours so you can get back up and running as soon as possible. We make it easy to do business with PRT.*

*We're here for you.*



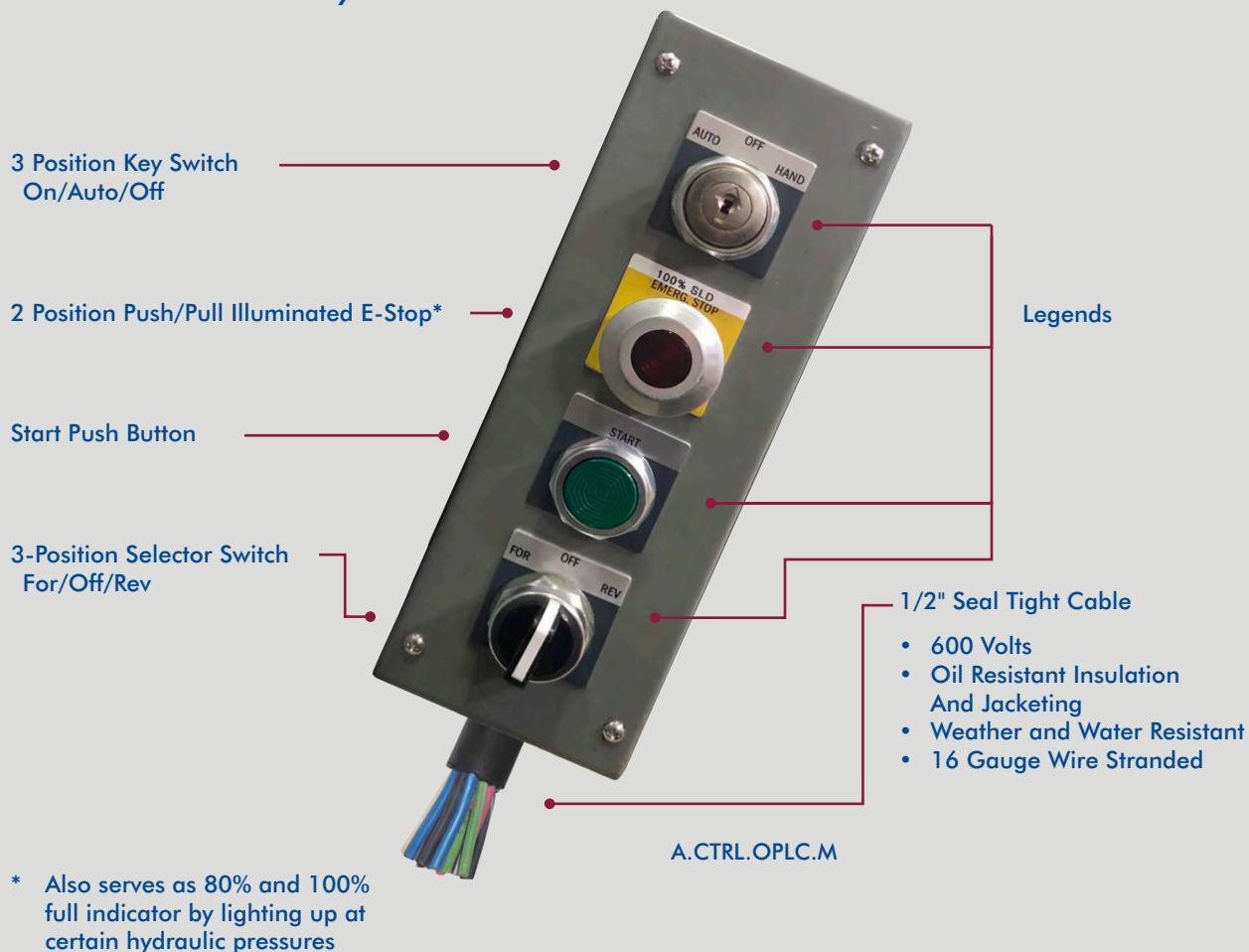
*Use our Quick Guide pages below... or look for this icon*

|   |           |
|---|-----------|
| <i>Quick Guide: Parts for the 30mm PLC Pendant . . . . .</i>        | <i>20</i> |
| <i>Quick Guide: Parts for the PLC Panel. . . . .</i>                | <i>21</i> |
| <i>Quick Guide: Power Unit Motor . . . . .</i>                      | <i>23</i> |
| <i>Quick Guide: Parts for the Cycon Board Pendant Station . . .</i> | <i>24</i> |
| <i>Quick Guide: Parts for the Cycon Board Control Panel. . . .</i>  | <i>26</i> |
| <i>Quick Guide: Power Unit Hydraulic Components. . . . .</i>        | <i>27</i> |



# 30mm PLC Pendant Station Overview

## Trusted Allen Bradley Controls



## Terms

- **Maintained** — The switch or button remains depressed after contact.
- **Spring return or Momentary** — The switch or button returns to the off position after being depressed.
- **Dead-man switch** — The start button has to be held in for the complete cycle; if the start button is released during operation the unit will shut off.
- **Normally Open (NO)** — Provide a normally open circuit when actuator is in free position.
- **Normally Closed (NC)** — Provide a normally closed circuit when actuator is in free position.

**Compactor parts  
have a 2-year warranty  
from date of purchase**

# QUICK GUIDE: Parts for the 30mm PLC Pendant Station



C.AB30.J44



C.AB30.X501

## 3-Position Key Switch

- Maintained/Maintained/Maintained Key Removal From All
- Legend Sold Separately
- Use with Contact C.AB30.XA



C.AB30.FXQ10R



C.AB30.X504Y

## 2-Position Push/Pull Illuminated E-Stop

- Maintained/Maintained Full Voltage
- Legend Sold Separately
- Use with Contact C.AB30.XD4



## Complete PLC Pendant Station w/15" Cable

A.CTRL.OPLC.M



C.AB30.A1



C.AB30.X547

## Push Button

- Green Flush Head
- Legend Sold Separately
- Use with Contact C.AB30.XA



C.AB30.XD4

## Contact Block

- Normally Closed Late Break
- Use With Stop Button



C.AB30.XA

## Contact Block

- Normally Open/Normally Closed
- Use With All Buttons



C.AB30.J91



C.AB30.X507

## 3-Position Selector Switch

- Momentary (Spring Return) To Center
- Legend Sold Separately
- Use with (2) Contacts C.AB30.XA



C.ABPS.N1

## AB Closing Button

- Knockout for 800 H Enclosure



C.KEY.DO18

## Replacement Key

- Use with 3-Position Key Switch

# QUICK GUIDE: Parts for the PLC Panel

We use trusted Allen Bradley Parts



PLC (programmable logic controller) is used to operate machinery—i.e. compactor power unit.

## PLC Standard Features

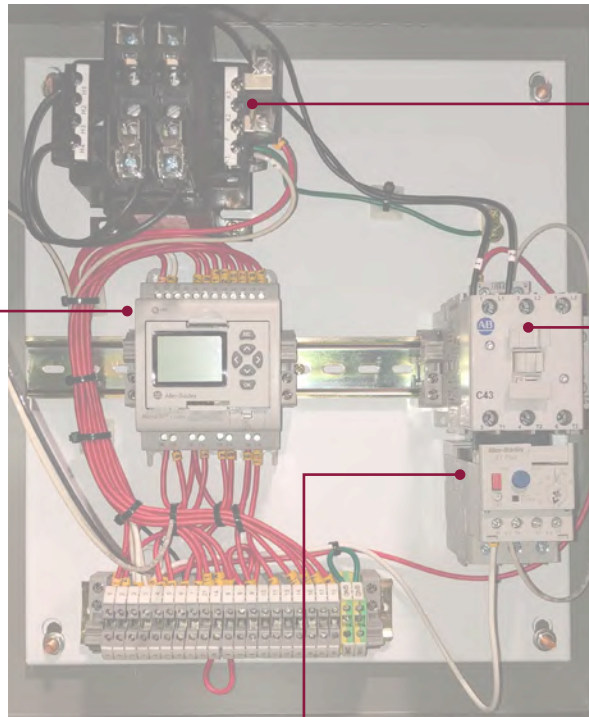
### Features

- Key Start/Stop
- Forward
- Reverse
- Motor Starter
- Reverse Solenoid
- Container Full
- Multi-Cycle

### Options\*

- Advanced Warning
- Photo Eye
- Single Phase
- Limit Switch

\* See options on page 16



## Complete PLC Control Panel With Pendant



### Overload Relay

- Adjustable 9 To 45 AMPs
- Drops voltage if motor overloads



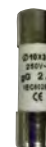
### 43 AMP Contactor

- 3 Pole W/1 Normally Open Contact
- 15 HP/230V/3PH
- Contactor is Motor Starter



### Transformer 150VA

- Primary (2 Fuses):
  - 208V
  - 230V
  - 460V
- Secondary (1 Fuse):
  - 120V
- Reduces voltage coming out of transformer for controls.



### Fuses

- 2AMP 250V Fuse (1 Per Transformer)
- 1.5 AMP Fuse (2 Per Transformer)

# Power Unit Overview



## Take a closer look under the hood of a power unit

### Motor

- The Electric motor is an electromechanical device that converts electrical energy into mechanical energy.
- The motor is the foundation to the power unit, which drives the hydraulic pump—allowing the entire operation to work.
- Electric motors are measured in horsepower. 1 hp = 746 watts.
- Electric motors in our industry are typically, 3 HP, 5 HP, 10 HP (most common), 15 HP and 20 HP.

### Hydraulic Gear Pump

- Gear pumps create pressure through the meshing of the gear teeth, which forces fluid around the gears to pressurize the outlet side.
- The advantage to gear pumps is catastrophic breakdown is a lot less common.





Universal 3 Phase Motor

Universal Motor

- Totally Enclosed Fan
- Interchangeable Shaft And Inserts To Fit Any OEM Pump
- Can Accommodate 2 or 4-Bolt Pump Mounts
- 215 TCZ Frame
- 10 Horsepower

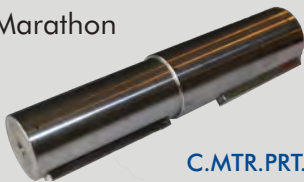


C.MTR.3PH10HP.PRT



Inserts (Sizes below)

- For Cram-A-Lot And WasteQuip
- PTR
- Marathon



C.MTR.PRT.SHAFT

C-Faced Shaft

- For Cram-A-Lot, WasteQuip, Marathon, PTR

One Universal Motor—Four Interchangeable Shafts

| ITEM DESCRIPTION                                    | ITEM CODE        |
|---|------------------|
| MOTOR ADAPTOR 3/4" WITH 3/16" KEY - CRAM-A-LOT & WQ | C..MTR.PRT.ADPT1 |
| MOTOR ADAPTOR 5/8" WITH 5/32" KEY - PTR             | C..MTR.PRT.ADPT2 |
| MOTOR ADAPTOR 7/8" WITH 1/4" KEY - MARATHON         | C..MTR.PRT.ADPT3 |



C.MTR.1PH10HP

Weg Motor Single Phase 10HP

- Totally-Enclosed, Fan-Cooled, 10 HP Motor
- 1750 RPM
- 215TC Frame
- UL And CSA Listed.



C.HYD.GPM12.G.K

Heavy Duty 12 GPM Gear Pump

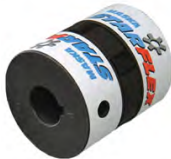
- 1/4 Keyway
- 7/8 Shaft
- 2HOLE SAE A Mount



C.MTR.C100.875K

Pump Coupling

- 100 S
- .875 Diameter for Shaft
- (KW1/4)



C.MTR.C100.1375

Motor Coupling

- 100 Series
- 1.375 Diameter for Shaft



C.MTR.CI100

Coupling Insert

- Buna Black 100 Series

# QUICK GUIDE: Parts for the Cycon Board Pendant Station



C.AB30.NX970



C.AB30.X547

## Push Button Key Switch

- Cylinder Lock Push Button Key Switch w/Guard Bezel w/2 NC
- Contact Blocks Included
- Uses Key E158 (included)



C.AB30.A2



C.AB30.X539



## Complete Cycon Board Pendant Station

A.CTRL.OPCB.M

## AB 30MM Black Push Button

- Black Flush Head
- Use with Contact C.AB30.XA



C.AB30.FX6



C.AB30.X504

## AB 30MM 2 Position E-Stop Red Button

- Maintained/Maintained Push/  
Pull E-Stop
- Use with Contact C.AB30.XD4



C.AB30.XA

## AB 30MM Contact Block

- Normally Open/Normally Closed
- Use With All Buttons



C.AB30.XD4

## AB 30MM Contact Block

- Normally Open/Normally Closed
- Use With All Buttons



C.KEY.E158

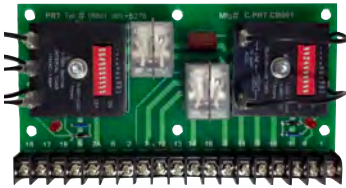
## Replacement Key

- Replacement Key For Push  
Button Key Switch

# QUICK GUIDE: Parts for Cycon Board Control Panel



We use trusted Allen Bradley Parts



C.PRT.CB001

## Cycon Board

PRT wants to assist its customers in avoiding costly repairs. The PRT Premier Plus+ Cycon Board was designed with this in mind. This Cycon board features timers and relays that can be switched out when they fail, avoiding the need for full-board replacement.

## Cycon Board

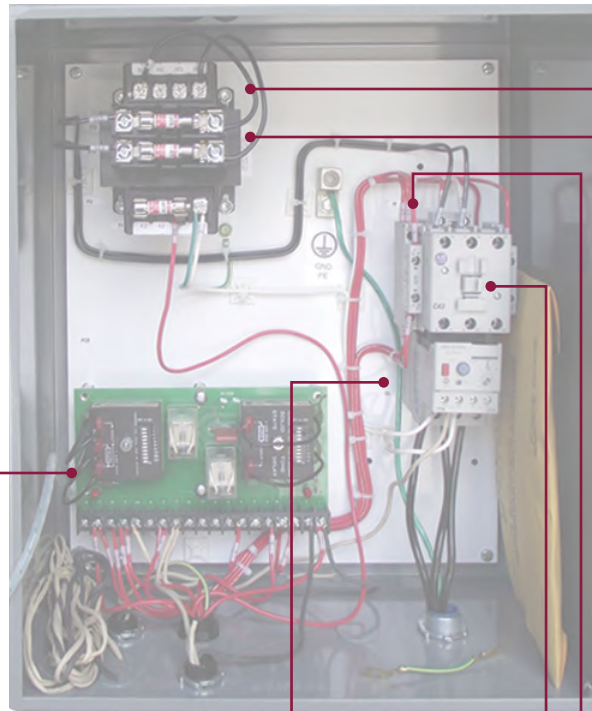
### Features

- Key Start/Stop
- Forward
- Reverse
- Motor Starter
- Reverse Solenoid

### Options\*

- Advanced Warning
- Container Full
- Multi-Cycle
- Photo Eye
- Single Phase

\*No Limit Switch Opt.



A.CPX.CB.3

## Complete Cycon Board Control Panel With Pendant



C.ABCO.1EFFD

## Overload Relay

- Adjustable 9 to 45 AMPs
- Drops voltage if motor overloads.



C.ABCO.C43D10

## 43 AMP Contactor

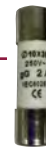
- 3 Pole W/1 Normally Open Contact
- 15 HP/230V/3PH
- Contactor is Motor Starter



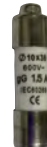
C.SNCTRANS.P23616

## Transformer 150VA

- Primary (2 Fuses):
  - 208V
  - 230V
  - 460V
- Secondary (1 Fuse):
  - 120V
- Reduces voltage coming out of transformer for Controls.



C.LF.FLM002



C.LF.KLDR01.5

## Fuses

- 2AMP 250V Fuse (1 Per Transformer)
- 1.5 AMP Fuse (2 Per Transformer)



C.ABCO.SA10

or



C.ABCO.SA20

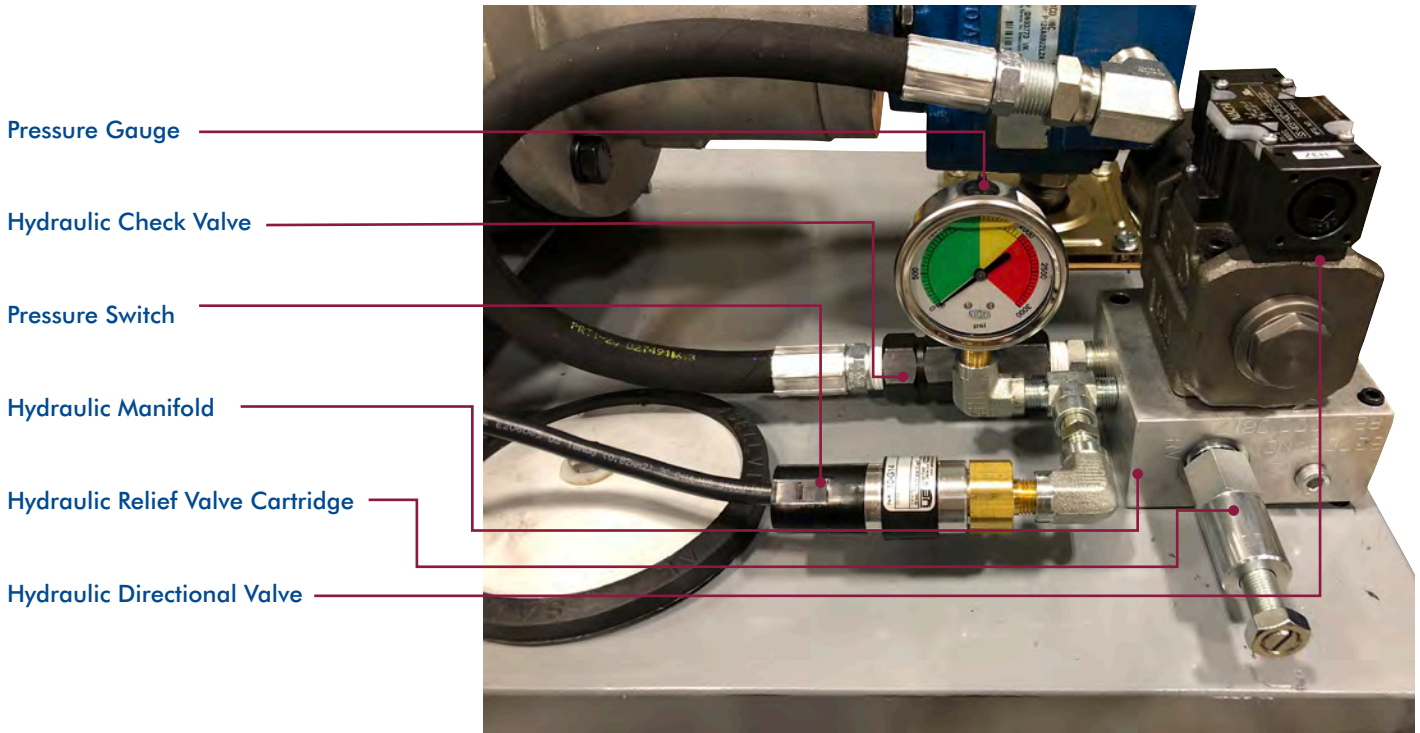
## AB Contactors/Overload S or DS Auxiliary Contact Block

- Side Mounting
- S = 1 Normally Open
- DS = 2 Normally Open

Ready to ship within 24 hours

Compactor Parts | 25

# Power Unit Hydraulic Overview



## Take a closer look at the hydraulic workings of a power unit

### Check Valve

- The check valve keeps fluid from flowing backwards through a system.
- Check valves prevent flooding.

### Manifold

- The hydraulic manifold regulates fluid flow between the hydraulic pump and other components in a hydraulic system.
- Directs fluid to directional valve.

### Relief Valve

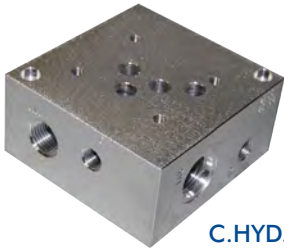
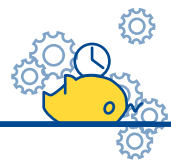
- The relief valve functions to bleed pressure off when a prescribed pressure level is reached.
- The relief valve setting provides burst protection for all components in a system.
- Every hydraulic systems requires at least one pressure relief valve.

### Directional Valve

- The directional control valves perform three functions: stop or block fluid flow, allow fluid flow, and change direction of fluid flow.



# QUICK GUIDE: Power Unit Hydraulic Components



C.HYD.D05MNFOLD.75

## Hydraulic Manifold For D05 Directional Valve

- 12 GPM Max Flow
- Highway System for Hydraulic Fluid



C.HYD.D5S.4W2P

## Hydraulic Directional Valve

- 2 Position 4 Way Valve
- Soft Shift Eliminates Hydraulic Hose Damage
- Directs Hydraulic Fluid Through Manifold



C.HYD.RC2

## Hydraulic Relief Valve Cartridge

- 20 GPM Max Flow
- Adjustable Pressure



C.HYD.CV.F75F

## Hydraulic Check Valve

- 5 PSI Crackling
- 18 GPM Max Flow
- F-F .5"
- Prevents Hydraulic Fluid Backflow



C.HYD.PG25.3KCL

## Pressure Gauge

- 3K PSI Glycerine Filled
- .25"
- Color Coded



C.HYD.OILGA.5

## Oil Level/Temperature Gauge

- 5" Front Mount
- Sight Gauge



C.PVS.BMA.1800-5

## Pressure Switch

- Oil Resistant Cable
- Adjustable 180–3000 PSI
- Factory Set 1900 PSI

# Need repairs in a hurry?

## Help is on the way with the Compactor Service Truck Kit

We make it easy! Get everything you need to fix those everyday compactor breakdowns all in one kit. Every part listed below is included in our Compactor Service Kit. Get what you need, before you need it and make repairs without waiting on parts. Keep your truck stocked and ready at all times.

Don't forget that PRT offers free phone technical support to talk you through any minor to major troubleshooting.

We are here for you!

### Compactor Service Truck Kit includes:

- AB TRANS 150VA 208/230/460V 110-120 3 FS
- LITTLE FUSE FLM 2AMP 250V
- LITTLE FUSE KLDR 1.5 AMP
- CYCON BOARD
- MICRO 810 STANDARD PROGRAM + SAFETY
- AB TMRLY RLY 2 POLE DT W/TBTOVR LD 8 PIN
- AB TMRLY BASE 8 PIN
- AB TMRLY ON DELAY TIMER 8 PIN
- TIMER 1 PRT CYCON BOARD 3 CONNECTOR 4300
- TIMER 2 PRT CYCON BOARD 2 CONNECTOR USAS
- AB LIMIT SW WOBBLE STICK W/NYLON EXTENS
- AB LIMIT SW SPR RET W/O LEVER 13 DEGREES
- AB LIMIT SW SD PUSH VERT ROLR SPRING RET
- AB LIMIT SW ARM ROD LEVER 5" LONG
- AB LIMIT SW AR RLR NYL .75X.28 1.19-3 RA
- BARKSDALE PRESSURE SW SINGL SETPOINT ADJ
- BARKSDALE PRESSURE SW DUAL SETPOINT ADJ
- PVS COMPACT PRESSURE SWITCH 180-3000 PSI
- SAFETY SWITCH ASSEMBLY
- UNIV. ALUM. MAGN. SFTY SWT W/ARMORED CBL
- AB PHTSW RETROREFLECTIVE PHOTO SENSOR
- AB PHTSW PWR BASE FOR RETROREFL SENSOR
- AB PHTSW 90 DEGREE MOUNTING BRACKET
- AB PHTSW REFLECTOR 3" RND AL BACK THR HL
- AB PHTSW RELAY FOR RETREFL SENS SPDT
- AB 22MM PUSH BUTTON FLUSH BLACK NON IL
- AB 22MM PUSH BUTTON FLUSH GREEN NON IL
- AB 22MM PUSH/PULL MUSHROOM RED (METAL)
- AB 22MM 2 POS KEY SPRG RET LFT RM LFT
- AB 22MM 2 POS KY MN/MN KY REM LEFT STD
- AB 22MM CONTACT BLOCK NORMALLY CLOSED
- AB 22MM CONTACT BLOCK NORMALLY OPEN
- AB 22MM PLASTIC MOUNTING LATCH
- AB 22MM "STOP" LEGEND (WHITE ON RED)
- AB 22MM OFF/ON LEGEND
- AB 22MM "START" LEGEND (BLACK ON WHITE)
- AB 22MM "REVERSE" LEGEND (BLACK ON WHITE)
- GE 22MM REPLACEMENT STD KEY (3095)
- AB 22MM REPLACEMENT STD KEY (3825)
- 455 KEY FOR A MCLAIN - MC-100-0193
- AB 30MM REPL KEY FOR CYL 800T (D018)
- AB 30MM REPL KEY FOR CYL LCK PSBN (E158)
- SQUARE D 30MM REPLACEMENT KEY (E10)
- AB 30MM PUSH BUTTON GREEN FLUSH HEAD
- AB 30MM PUSH BUTTON BLACK FLUSH HEAD
- AB 30MM 2 POS KY MAINT/MAINT, KY REM. LF
- AB 30MM 2 POS KY SPRNG RET TO LEFT, KY R
- AB 30MM 2 POS PS/PL E-STOP MN/MN
- AB 30MM CONTACT BLOCK 1NO - 1NC
- AB 30MM RED E-STOP LEGEND
- AB 30MM OFF/ON LEGEND
- AB 30MM REVERSE LEGEND
- AB 30MM START LEGEND
- AB CNT 43A 3 POLE W/1NO 15HP/230V/3
- AB CNT/OVLD RELAY 9A-45A W/C30 & C43
- AB CNT/OVLD AUX CONT BLOCK 2 NO
- DIR VLV03 4 WAY 2 PS NFPA 1 SOLE HIGH FL
- DIR VLV03 4 WAY 3 PS NFPA 2 SOLE HIGH FL
- DIR VLV05 REV. 4 WAY 2 PS NFPA 1 SOLE HIGH FL
- DIR VLV05 4 WAY 3 PS NFPA 2 SOLE HIGH FL
- DIR VLV05 4 WAY 3 PS NFPA 2 SOLE (Tandem)
- PRESSURE GAUGE 2.5" GLY FL 3000 PSI .25"
- PRESSURE GAUGE COLOR 2.5" GLY 3000 PSI .25"
- H&F FEMALE QUICK DISCONNECT 0.50" EQUIV
- H&F MALE QUICK DISCONNECT 0.50" EQUIV



K.COMRST

# Take a closer look at Compactor Parts

*We have broken out the following sections to help guide your search. All of the replacement parts in this catalog are considered stock parts. These parts are universal solutions to the most common repairs. We ship all stock parts within 24 hours.*



|                            |       |
|----------------------------|-------|
| Electrical Parts . . . . . | 30–43 |
| Hydraulic Parts . . . . .  | 44–50 |
| Structural Parts. . . . .  | 51–53 |



**(888) 999-5278**

*Remember that we are here with live technical support to help you identify any part or troubleshoot a repair. Our technicians:*

- *Cross Reference manufacturer parts/numbers*
- *Troubleshoot in-field repairs and emergencies*
- *Have answers about equipment questions*
- *Give advice on savings opportunities and cost effective alternatives*

# 30MM Buttons and Contact Blocks

ELECTRICAL

E-Stop Buttons

### What is a Contact Block?

An electrical contact is an electrical circuit component found in electrical switches, relays, connectors and circuit breakers.

Contact blocks are used in combination to prevent N.C. and N.O. contacts from closing at the same time.



C.AB30.D6

#### AB 30MM Push Button Mushroom E-Stop

- Momentary Stop
- Use with Contact C.AB30.XA



C.AB30.FX6

#### AB 30MM 2 Position E-Stop Red Button

- Maintained/Maintained Push/Pull E-Stop
- Use with Contact C.AB30.XD4



C.AB30.FXP16R

#### AB 30MM 2 Position E-Stop Red Button

- Maintained/Maintained Push/Pull Illuminated E-Stop
- Use with Contact C.AB30.XA or Contact C.AB30.XD4



C.AB30.PB16R

#### AB 30MM Push Button Extended Head E-Stop

- Momentary Stop
- Illuminated Red

### Contact Blocks



C.AB30.XA

#### AB 30MM Contact Block

- Normally Open/Normally Closed



C.AB30.XD4

#### AB 30MM Contact Block

- Normally Closed/Late Break

YOUR CHOICE!

Buy the button separately (above), or, for your convenience, we sell pre-assembled buttons with proper contact block included (right).

### MAKE IT EASY! Pre-Assembled with Contact Block



| ITEM DESCRIPTION                             | ITEM CODE       |
|--|-----------------|
| ASMB AB 30MM PSH BTN MUSHR EST W/1NO 1NC     | A.AB30.D6A      |
| ASMB AB 30MM PSH BTN MUSHR EST W/1NC         | A.AB30.D6D2     |
| ASMB AB 30MM 2 P PS/PL E-STP M/M W/1NCLB     | A.AB30.FX6D4    |
| ASMB AB 30MM 2 P PS/PL ILL E-STP M/M W/1NCLB | A.AB30.FXQ10RD4 |

# 30MM Buttons and Contact Blocks

## Push Buttons and Selector Switch

ELECTRICAL

### Contact Blocks



C.AB30.XA

### AB 30MM Contact Block

- Normally Open/Normally Closed



C.AB30.A1

### AB 30MM Green Push Button

- Green Flush Head
- Use with Contact C.AB30.XA



C.AB30.A2

### AB 30MM Black Push Button

- Black Flush Head
- Use with Contact C.AB30.XA



C.AB30.J91



### AB 3-Position Selector Switch

- Stock Knob
- Momentary (Spring Return) To Center
- Legend Sold Separately
- Use with Contact C.AB30.XA

### YOUR CHOICE!

Buy the button separately (above), or, for your convenience, we sell pre-assembled buttons with proper contact block included (right).

MAKE IT EASY!  
Pre-Assembled with Contact Block



| ITEM DESCRIPTION                          | ITEM CODE   |
|---|-------------|
| ASMB AB 30MM PSH BTN GRN FLSH W/1 NONC    | A.AB30.A1A  |
| ASMB AB 30MM PSH BTN GRN FLASH HD W/2NO   | A.AB30.A1A2 |
| ASMB AB 30MM PSH BTN BLK FLSH HD W/1NO NC | A.AB30.A2A  |
| ASMB AB 30MM 3 POS SS SP RC STD W/1NO 1NC | A.AB30.J91A |
| ASMB AB 30MM 3 POS SS SP RC STD W/2NO 2NC | A.AB30.J91B |



# 30MM Key Switches and Contact Blocks

## ELECTRICAL



C.AB30.J44

### AB 3-Position Key Switch

- MAINT/MAINT/MAINT
- Key Removal All
- Use with Contact C.AB30.XA
- Uses Key D018



C.AB30.H31

### AB 30MM Key Switch

- 2 POS Key MAINT/MAINT
- Key Removal Left
- Use with Contact C.AB30.XA
- Uses Key D018

### Contact Blocks



C.AB30.XA

### AB 30MM Contact Block

- Normally Open/Normally Closed



C.AB30.H48

### AB 2-Position 30MM Key Switch

- Key SPRNG RET TO LEFT
- Key Removal Center
- Use with Contact C.AB30.XA
- Uses Key D018



C.AB30.NX970

### AB 30MM Key Switch

- Cylinder Lock Push Button Key Switch w/Guard Bezel w/2 NC
- Contact Blocks Included
- Uses Key E158 (included)



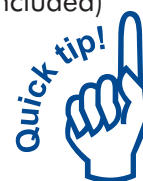
C.AB30.J631

### AB 3-Position 30MM Key Switch

- SPRNG RET TO CTR
- Key Removal Center
- Use with Contacts C.AB30.XA, C.AB30.XA2, C.AB30.XA4, C.AB30.XD1, or C.AB30.XD2
- Uses Key D018 (included)

## MAKE IT EASY!

Pre-Assembled with Contact Block



### YOUR CHOICE!

Buy the button separately (above), or, for your convenience, we sell pre-assembled buttons with proper contact block included (right).

#### ITEM DESCRIPTION

#### ITEM CODE

3 P KY M/M/M KY RA W/1NO 1NC

A.AB30.J44A

3 P KY M/M/M KY RA W/2NO 2NC

A.AB30.J44B

2 POS KY MM KRL W/1 NO NC

A.AB30.H31A

ASMB AB 30MM 2 POS KY M/M KY R LF W/1 NO

A.AB30.H31D1

ASMB AB 30MM 2 POS KY W/1 NO NC

A.AB30.H48A

ASMB AB 30MM 2 POS KY W/2 NO NC

A.AB30.H48B

ASMB AB 30MM 2 POS KY W/1 NO

A.AB30.H48D1

ASMB AB 30MM 2 POS KY W/2 NO

A.AB30.H48D12

ASMB AB 30MM 3 POS KY W/1NO 1NC

A.AB30.J631A

ASMB AB 30MM 3 POS KY W/2NO 2NC

A.AB30.J631B

## 30MM Accessories

### Blocks, Legends, Keys, Bulbs and Caps

ELECTRICAL

#### 30MM Blocks



C.AB30.XA

#### AB 30MM Contact Block

- Normally Open/  
Normally Closed



C.AB30.XD1

#### AB 30MM Contact Block

- Normally Open



C.AB30.XD2

#### AB 30MM Contact Block

- Normally Closed



C.AB30.XD4

#### AB 30MM Contact Block

- Normally Closed/Late  
Break

#### 30MM Legends



C.AB30.X504



C.AB30.X504Y



C.AB30.X507



C.AB30.X529



C.AB30.X539



C.AB30.X547



C.AB30.X550

#### 30MM Replacement Keys



C.KEY.D018

- Replacement for  
AB CYL Lock



C.KEY.E10

- Replacement for  
Square D



C.KEY.E158

- Replacement  
for AB CYL Lock  
Push Button

#### 30MM Replacement Bulb



C.AB30.N65

- AB PS/PL Bulb  
150-250mA 6.3V

#### 30MM Replacement Caps



C.AB30.N159R

- AB PS/PL Illuminated  
Red Cap



C.AB30.N160A

- AB PS/PL  
No Illumination  
Red Cap



C.AB30.N246R

- AB Push No  
Illumination Red Cap



## 22MM Buttons

### ELECTRICAL

## E-Stop Buttons, Push Buttons, and Key Switches

### 22MM E-Stop Buttons



C.AB22.MLMP44

#### AB 22MM 2 Position E-Stop Red Mushroom

- Push/Pull w/40MM
- Metal



C.AB22.MMM44

#### AB 22MM E-Stop

- Push Button



C.AB22.MMP44

#### AB 22MM 2 Position E-Stop Red

- Maintained/Maintained
- Push/Pull

### 22MM Push Buttons



C.AB22.MF2

#### AB 22MM Momentary Push Button Black

- Flush Head



C.AB22.MF3

#### AB 22MM Momentary Push Button Green

- Flush Head



C.AB22.MF6

#### AB 22MM Momentary Push Button Blue

- Flush Head

### 22MM Key Switches



C.AB22.MKM21

#### AB 22MM 2 Position Key Selector Switch

- Maintained/Maintained
- Key Removal Left
- Uses Key 3825



C.AB22.MKR21

#### AB 22MM 2 Position Key Selector Switch

- Spring Return
- Key Removal Left
- Uses Key 3825



C.AB22.MKB34

#### AB 22MM 3 Position Key Selector Switch

- MM/MN/MM
- Key Removal Center
- Metal
- Uses Key 3825



C.AB22.PKB34

#### AB 22MM 3 Position Key Selector Switch

- MM/MN/MM
- Key Removal Center
- Plastic
- Uses Key 3825

## 22MM Accessories

### Contacts, Legends, Keys and Latches

ELECTRICAL

#### Contact Blocks



C.AB22.X01

#### AB 22MM Contact Block

- Normally Closed



C.AB22.X10

#### AB 22MM Contact Block

- Normally Open

#### 22MM Legends



C.AB22.11RE212

#### Stop



C.AB22.11WE165

#### Off/On



C.AB22.11WE208

#### Start

#### 22MM Replacement Keys



C.KEY.3095

#### GE 22MM Replacement Key

- Replacement for General Electric



C.KEY.3825

#### AB 22MM Replacement Key

- Replacement for Allen-Bradley



C.KEY.455

#### 455 Replacement Key

- Replacement for Schneider Electric/Telemecanique

#### 22MM Mounting Latch



C.AB22.ALM

#### AB 22MM Mounting Latch

- Metal



C.AB22.ALP

#### AB 22MM Mounting Latch

- Plastic

Be sure to remember the mounting latch to connect the contact block to the switch



#### Want to Switch to 30MM?

Contact our technical team to find out how to order pre-assembled 30MM buttons.

# Safety Switches

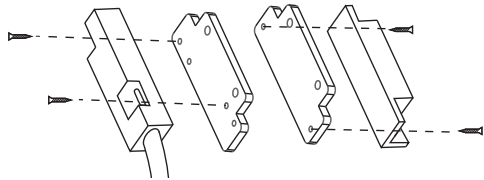
## ELECTRICAL



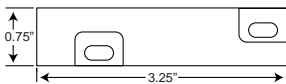
C.SS.MAG.PRT

### Universal Magnetic Safety Switch

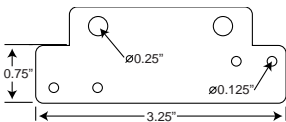
The Aluminum Magnetic Safety Switch was created in response to customer requests for a universal mounting solution. PRT provides mounting plates with enlarged holes to accommodate standard screw sizes as an alternative to refitting or redrilling. This safety switch is extra durable with an aluminum plate that outlasts other plastic designs and a steel armored cable providing product longevity. 15 ft Cable.



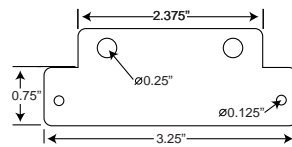
Mag Switch Assembly



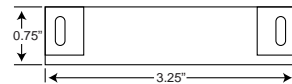
Switch



Mount Plate for Switch



Mount Plate for Magnet Plate



Magnet

### Specifications

- Normally Open Contact
- Voltage: 24/120 AC
- Current 2A
- Leads: 2
- Shock Resistance: 50g
- Vibration Resistance: 30g
- Activation Distance: 0.5 to 1.5 inch



C.SS.MAG.NYL

### Magnetic Safety Switch

The Nylon Magnetic Safety Switch was designed to mirror leading OEM safety switches with a much higher cost savings to you. The housing is made of glass-filled nylon material and is well suited for rugged environments and is UL/CSA recognized. No additional mounting plates needed as holes will align automatically. 15 ft Cable.



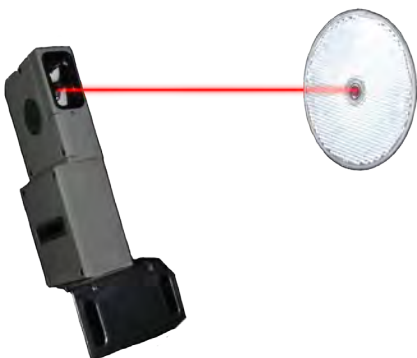
C.SS.ELE

### Keyed Safety Switch

- Includes Mounting Cable and Screws
- Pre-wired with 15' of Two-Conductor Cable
- Voltage: 24/120 AC or 12/24 DC

### Common Applications

Dog House Doors  
Chute Doors  
Baler Gates



PRT Complete Photo Eye Kit from Allen Bradley

PRT works to create quality product solutions that improve operational efficiencies and maximize profits. This is why we only partner with quality manufacturers like Allen-Bradley whose products meet our high standards.

The PRT Complete Photo Eye with Flashing Alarm Kit, used in conjunction with your compactor power unit, offers a great solution for compactors that need to be self-monitored due to location or user access restrictions. With this Kit, compactor operation will trigger only when trash accumulates beyond a preset level. This occurs within the unit when a sender transmits a beam of light to a receiver. When this beam of light is interrupted by a pile of trash, it alerts the compactor to begin its compacting process.

The kit’s components are comprehensive and include ANSI required flashing alarm components. The kit can be added to a PRT power unit, included in a panel purchase, added to a PLC order, or you can purchase parts individually.

Complete Photo Eye with Flashing Alarm Kit includes:

- Retro-reflective photo sensor and power base
- 90° mounting bracket
- Relay
- 3" round reflector
- Complete Flashing Alarm Kit – ANSI Required
  - 120v alarm module with red cover
  - Vertical Mounting Base
  - 120v incandescent light and bulb (replaceable)

| ITEM DESCRIPTION  | ITEM CODE       |
|---|-----------------|
| COMPLETE PHOTO EYE AND FLASHING ALARM KIT                 | K.ABPH.5000     |
| RETRO REFLECTIVE PHOTO SENSOR                             | C.ABPH.42MRU    |
| POWER BASE 120V AC  | C.ABPH.42MTB    |
| RIGHT ANGLE MOUNTING BRACKET (90°)                        | C.ABPH.60.1785  |
| PHOTOSWITCH RELAY FOR SENSOR                              | C.ABPH.8.590    |
| 3" ROUND REFLECTOR  | C.ABPH.92.89    |
| COMPLETE ALARM KIT (ANSI COMPLIANT)                       | K.ABPH.FLALRM   |
| ALARM MODULE 120V AC DUAL CIRCUIT SINGLE AND PULSING TONE | C.ELE.PH.ALARM  |
| RED COVER FOR FLASHING LIGHT ALARM                        | C.ELE.PH.REDLGH |
| VERTICAL MOUNTING BASE                                    | C.ELE.PH.BASE   |
| INCANDESCENT BULB 120V AC                                 | C.ELE.PH.INCLMP |

Call for more information on this easy trash management solution and prevent unneeded wear and tear on your equipment.

# Limit Switches and Pressure Switches

## ELECTRICAL



C.ABLS.WSP

### AB Limit Switch

- Wobble Stick with Nylon Extension



C.ABLS.CP

### AB Limit Switch Plunger

- Two Circuit



C.ABLS.AP

### AB Lever Limit Switch w/Spring Return

- Two Circuit
- Clockwise and C-Clockwise Operation
- NEMA type 4 & 13



C.ABLS.NPTP

### AB Lever Limit Switch w/Spring Return

- Four Circuit
- Clockwise and C-Clockwise Operation
- NEMA type 4 & 13



C.ABLS.W2

### AB Arm Roller Lever

- Adjustable Nylon
- 0.75" x 0.28", 1.19-3 Radius



C.ABLS.W3

### AB Rod Lever

- 5" Stainless Steel
- 0.13" Diameter



C.ABLS.W2A

### AB Arm Roller Lever

- Adjustable Nylon
- 1.5" x 0.28", 1.19-3 Radius



C.ABLS.W3A

### AB Rod Lever

- 11.5" Stainless Steel



C.BDPS.C9612-3

### Single Setpoint Pressure Switch

- Barksdale Product
- Adjustable 280-3000 PSI
- SPDT Single Circuit



C.BDPS.C9622-3

### Dual Setpoint Pressure Switch

- Barksdale Product
- Adjustable 280-3000 PSI
- SPDT Dual Circuit



C.PVS.BMA.1800-5

### Pressure Switch

- Oil Resistant Cable
- Adjustable 180-3000 PSI
- Factory Set 1800 PSI

## Male



+



=



### Base Connector Housing

- Single Lever
- Part Only

| ITEM DESCRIPTION | ITEM CODE     |
|------------------|---------------|
| 6 PIN            | C.CNT.6PBSSL  |
| 10 PIN           | C.CNT.10PBSSL |

### Male Insert for Base Spring Type

- Male Insert
- Part Only

| ITEM DESCRIPTION | ITEM CODE   |
|------------------|-------------|
| 6 PIN            | C.CNT.6PML  |
| 10 PIN           | C.CNT.10PML |

### Complete Base Connector Housing with Male Insert

- Base Connector Housing
- Male Insert
- Assembled

| ITEM DESCRIPTION | ITEM CODE     |
|------------------|---------------|
| 6 PIN            | A.CNT.6PBSML  |
| 10 PIN           | A.CNT.10PBSML |

## Female



+



=



### Hood Connector Housing

- Top Entry, Single Lever
- Uses Female Insert
- Part Only

| ITEM DESCRIPTION | ITEM CODE     |
|------------------|---------------|
| 6 PIN            | C.CNT.6PHDSL  |
| 10 PIN           | C.CNT.10PHDSL |

### Female Insert for Hood Spring

- Female Insert
- Part Only

| ITEM DESCRIPTION | ITEM CODE   |
|------------------|-------------|
| 6 PIN            | C.CNT.6PFM  |
| 10 PIN           | C.CNT.10PFM |

### Complete Hood Connector Housing with Female Insert

- Hood Connector Housing
- Female Insert
- Assembled

| ITEM DESCRIPTION | ITEM CODE     |
|------------------|---------------|
| 6 PIN            | A.CNT.6PHDFM  |
| 10 PIN           | A.CNT.10PHDFM |

We stock Base Pin Connectors in the most common universal sizes, 6 pin and 10 pin.

Buy them completely assembled or buy just what you need individually.



# Motor Starters and Heater Elements

## ELECTRICAL



### AB Heater Elements

- Allen-Bradley Starter/Heater Element
- Three Phase With Three-Pole Overload Protection
- NEMA Full Voltage Starter
- UL And CSA Listed

| AB SERIES # | PRT ITEM CODE |
|-------------|---------------|
| W55         | C.ABSE.W55    |
| W63         | C.ABSE.W63    |
| W64         | C.ABSE.W64    |
| W65         | C.ABSE.W65    |
| W66         | C.ABSE.W66    |
| W68         | C.ABSE.W68    |
| W69         | C.ABSE.W69    |
| W70         | C.ABSE.W70    |
| W75         | C.ABSE.W75    |



C.ABSE.509-COD

### AB Starter/Heater Element

- Starter Size 2



C.JOCL.HP25U03

### Joslyn Clark Starter/Heater Element

- Starter Size 2



C.ABSE.595.A

### AB Starter Element

- Normally Open Auxiliary Contact



C.ABSE.595.B

### AB Starter Element

- Normally Closed Auxiliary Contact



C.SNCTTRANS.P24505F4



C.ABTR.HB33A1



C.LF.FLM002



C.LF.KLDR01.5

Transformer 150VA

- Primary (2 Fuses):
  - 208V
  - 230V
  - 460V
- Secondary (1 Fuse):
  - 120V
- Reduces voltage coming out of transformer for Controls.

AB Blade Base Relay

- 15 AMP
- 3 PDT
- 120V
- 11 Blade

Fuses

- 2AMP 250V  
(1 Per Transformer)

Fuses

- 1.5 AMP  
(2 Per Transformer)



C.ABCO.SA10

or



C.ABCO.SA20

AB Contactors/Overload S or DS Auxiliary Contact Block

- Side Mounting
- S = 1 Normally Open
- DS = 2 Normally Open



AB IEC Contactor

- Three Pole with 1 NO Contact

| ITEM DESCRIPTION             | ITEM CODE     |
|------------------------------|---------------|
| 20A 3 POLE W/1NO 7.5HP 15HP  | C.ABCO.C23D10 |
| 43A 3 POLE W/1NO 15HP/230V/3 | C.ABCO.C43D10 |
| 60A 3 POLE W/1NO 10HP 20HP   | C.ABCO.C60D10 |



AB Contactor Overload Relay

| ITEM DESCRIPTION     | ITEM CODE    |
|----------------------|--------------|
| 5.4A-27A W/C09 & C23 | C.ABCO.1EFEB |
| 9A-45A W/C30 & C43   | C.ABCO.1EFFD |
| 18A-90A W/C60 & C85  | C.ABCO.1EFGE |

# Cycon Board Only Relay and Timers

## ELECTRICAL



C.ABTR.HA32A134

### 8 Pin 120V Relay

- Eight Pin, Two Pole Timer Relay
- Test Button



C.ABTR.HN125

### 8 Pin Relay/Time Base

- Eight Pin Timer Base



C.ABTR.HRM12TA1

### On-Delay 8 Pin Timer

- Eight Pin Timer On Delay



C.PRT.RL001

### Replacement R1 and R2 Relays

- Replacement R1 and R2 Relays for Cycon Board
- 8 Blades



C.PRT.TM001

### T1 Timer Replacement

- Replacement Interval T1 Timer for Cycon Board
- 3 Connector 4300

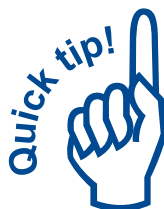


C.PRT.TM002

### T2 Timer Replacement

- Replacement Delay T2 Timer for Cycon Board
- 2 Connector USAS

Avoid Costly Repairs!

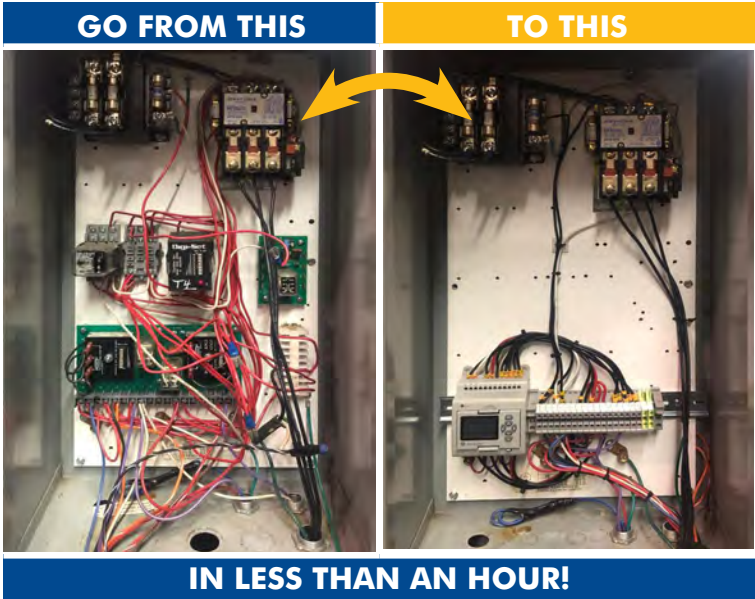
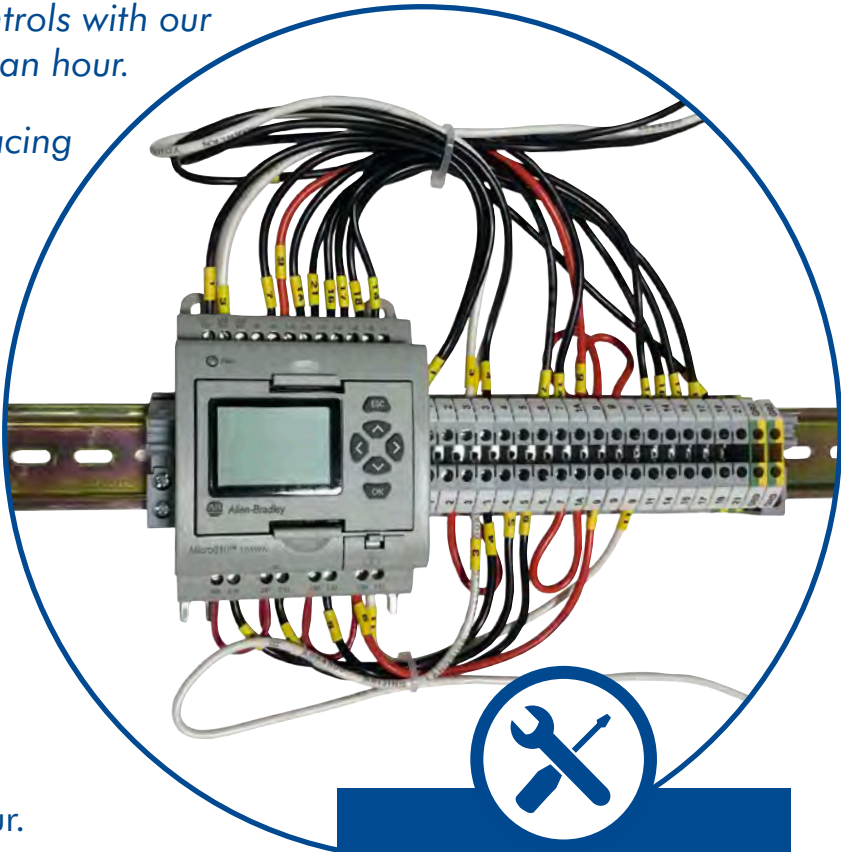


The PRT Cycon board features timers and relays that can be switched out when they fail, avoiding the need for full-board replacement.

Upgrade your outdated analog controls with our easy to use digital PLC in less than an hour.

Get Smart technology without replacing your power unit!

- This Allen-Bradley PLC is a universal solution for all OEM equipment.
- Operates with pressure or bypass cylinders.
- ANSI Safe Stop, door count auto-start, and photo-eye functionality.
- Multi-cycle, advanced warning, and container full programming is included.
- Easy to install in less than an hour.



(888) 999-5278

FREE Live Technical Support Available

Here for you—answers when you need them.

Additional Retro Kit add-on features available:

- Baler
- Cart Tippers
- Oil level warning
- Precrusher
- VIPs
- ... and more

ITEM DESCRIPTION

RETRO KIT: MICRO 810 STANDARD PROGRAM

RETRO KIT: MICRO 810 STANDARD W/AUTO START ANSI PROGRAM

ITEM CODE

A.AB.M810.RT.P2

A.AB.M810.RT.P2.P3

# Hydraulic Cylinders

## HYDRAULIC

### Self-Contained Compactor Hydraulic Cylinders



C.CYL.320

#### 20" Compactor Cylinder

- 3" x 20" bore x 1.125" rod  
16" stroke (pressure)
- Compactor Application:  
6 yard Pack-Man



C.CYL.322.BP

#### 22" Compactor Cylinder

- 3" x 22" bore x 1.25" rod  
18.5" stroke (by-pass)
- Compactor Application:  
MPT & Mini-M



C.CYL.429.BP

#### 29" Compactor Cylinder

- 4" x 29" bore x 2.5" rod  
25" stroke (by-pass)
- Compactor Application:  
RJ-88SC



C.CYL.436

#### 36" Compactor Cylinder

- 4" x 36" bore x 2.5" rod  
31.25" stroke (pressure)
- Compactor Application:  
RJ-250SC



C.CYL.436.BP

#### 36" Compactor Cylinder

- 4" x 36" bore x 2.5" rod  
31.25" stroke (by-pass)
- Compactor Application:  
RJ-250SC



C.CYL.436.BPHT

#### 36" Compactor HT Cylinder

- 4" x 36" bore x 2.5" rod  
31.25" stroke (by-pass)
- High Temperature Seals
- Poppet Free, Less Moving Parts
- Compactor Application:  
RJ-250SC



C.CYL.437

#### 37" Compactor Cylinder

- 4" x 37" bore x 2.5" rod  
32" stroke (pressure)
- Compactor Application:  
McClain



C.CYL.437.CT

#### 37" Compactor Cylinder

- 4" x 37" bore x 2.5" rod  
32" stroke (pressure)
- Compactor Application:  
Galbreath SC-2



C.CYL.437.CT.BP

#### 37" Compactor Cylinder

- 4" x 37" bore x 2.5" rod  
32" stroke (by-pass)
- Compactor Application:  
Galbreath SC-2



C.CYL.550.BP

#### 50" Compactor Cylinder

- 5" x 50" bore x 2.5" rod  
42" stroke (by-pass)
- Compactor Application:  
RJ-100/RJ-250VL

### Plates and Pins



C.CYL.PLT.4.1

#### Boss Pin Plate

- 4" x 4" x 1" Boss Pin Plate
- 1.25" diameter hole



C.CYL.PIN.9

#### Cylinder Pin

- 1.25" dia. x 9" length
- Universal adjustment



## Stationary Compactor Hydraulic Cylinders



C.CYL.420

### 20" Compactor Cylinder

- 4" x 20" bore x 2" rod  
16" stroke (pressure)
- Compactor Application:  
Dumper, VIP, JP-6 & SP-16



C.CYL.442.BP

### 42" Compactor Cylinder

- 4.5" x 42" bore x 2.5" rod  
37.25" stroke (by-pass)
- Compactor Application: TC-2



C.CYL.452.BP

### 52" Compactor Cylinder

- 4.5" x 42" bore x 2.5" rod  
45.25" stroke (by-pass)
- Compactor Application: TC-2.5



C.CYL.661

### 61" Compactor Cylinder

- 6" x 61" bore x 2.5" rod  
56" stroke (pressure)
- Compactor Application: RJ-225



C.CYL.661.HD

### 61" Compactor Cylinder

- 6" x 61" bore x 4" rod  
56" stroke (pressure)
- Compactor Application:  
RJ-225 HD

**PRT Cylinders  
have a 1-year warranty  
from date of purchase**

### Self-Contained vs. Stationary Compactor— What's the difference?

- **Self-Contained Compactors** are designed to be completely enclosed with a sealed processing chamber that provides a clean, leak-free, more sanitary path for wet waste.
- **Stationary Compactors** are typically used for dry waste (i.e. for compacting cardboard and mixed paper) and compact trash into a detachable container.

### Can't find the cylinder you're looking for?

*Call PRT for Technical Support  
and we can help you find  
exactly what you need at an  
unbeatable price.*

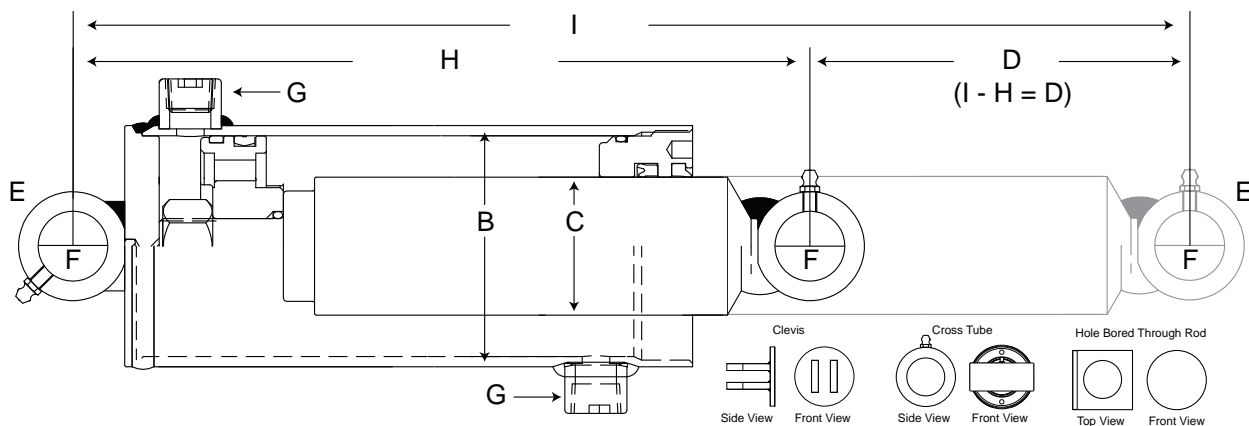


*Learn how to measure your cylinder.  
See worksheet on page 46.*



# OEM Cylinder Replacement Worksheet

**HYDRAULIC**



## Quick OEM Match

Equipment Make \_\_\_\_\_ Equipment Model \_\_\_\_\_

**OR**

## Advanced OEM Match

- A. Cylinder Type ☐ Pressure ☐ Bypass
- B. Bore \_\_\_\_\_
- C. Rod \_\_\_\_\_
- D. Stroke: \_\_\_\_\_
- E. Mount Type  
 Bore End ☐ Clevis ☐ Cross Tube ☐ Other  
 Rod End ☐ Clevis ☐ Cross Tube ☐ Hole Bored Through Rod ☐ Other
- F. Pin Size \_\_\_\_\_
- G. Port Location (Mark with X on drawing if different)  
 Port Fittings ☐ NPT ☐ SAE ☐ Other
- H. Retracted Length \_\_\_\_\_
- I. Extended Length \_\_\_\_\_

Company Name \_\_\_\_\_

Contact Name \_\_\_\_\_

Phone Number \_\_\_\_\_

Email \_\_\_\_\_

Quantity Needed \_\_\_\_\_

### PRT ONLY

Price: \_\_\_\_\_

Part #: \_\_\_\_\_

Date: \_\_\_\_\_



C.HYD.PG25.3KCL

### Color Pressure Gauge 2.5"

- 3000 PSI Glycerine-Filled 2.5" Pressure Gauge
- Green, Yellow, Red Dial
- 1/4" NPT Bottom Mount



C.HYD.PG25.3000

### Pressure Gauge 2.5"

- 3000 PSI Glycerine-Filled 2.5" Pressure Gauge
- 1/4" NPT Bottom Mount



C.HYD.GPM12.G.K

### Heavy Duty 12 GPM Gear Pump

- 1/4 Keyway
- 7/8 Shaft
- 2HOLE SAE A Mount
- 1.00" inlet .75" outlet



A.PRT.PT.3KCL

### Assembled Hydraulic Pressure Tester

- Hydraulic Pressure Tester For Power Unit
- Includes Pressure Tester Valve, H&F Fitting And Reducer Fitting, Elbow Fitting, Quick Disconnects, and 2.5" Glycerin-Filled 3000 PSI Pressure Gauge



C.HYD.GPM18.G.K

### Heavy Duty 18 GPM Gear Pump

- 1/4 Keyway
- 7/8 Shaft
- 2HOLE SAE A Mount
- 1.25" inlet .75" outlet

# Manifold and Directional Valves

## HYDRAULIC



C.HYD.D05MNFOLD

### D05 Universal Manifold

- Universal D05 12GPM Max Flow Manifold

### Take a closer look at the Manifold

*The hydraulic manifold regulates fluid flow between the hydraulic pump and other components in a hydraulic system.*

*The manifold directs fluid to directional valve.*



C.HYD.D5S.4W2P

### 2 Position Directional Valve 4 Way (DO5)

- Four-Way Solenoid High-Flow Directional Valve with 2 Positions
- Soft-Shift
- Reverse Coil
- NFPA 1



C.HYD.D5S.4W2P2

### 2 Position Directional Valve 4 Way

- Four-Way Solenoid High-Flow Directional Valve with 2 Positions
- Soft-Shift
- Standard Coil
- NFPA 1

### Transition Flow



### Transition Flow



In a **two-position valve**, the first position operates the cylinder in one direction, while the second position reverses the direction.

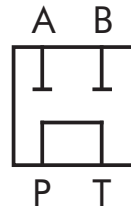


C.HYD.D3D.4W3P

## 3 Position Directional Valve 4 Way (DO3)

- Four-Way Solenoid High-Flow Directional Valve with 3 Positions
- Soft-Shift
- NFPA 2

### Center Position



Tandem

A four-way directional valve powers double-acting cylinder during extension and retraction. It has four external ports to power in either direction. They are typically manufactured as two- or three-position valves.

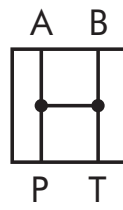


C.HYD.D5D.4W3P

## 3 Position Directional Valve 4 Way (DO5)

- Four-Way Solenoid High-Flow Directional Valve with 3 Positions
- Soft-Shift
- NFPA 2

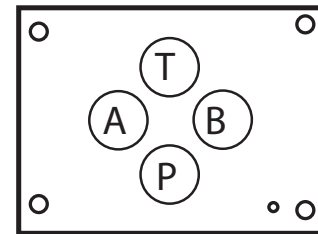
### Center Position



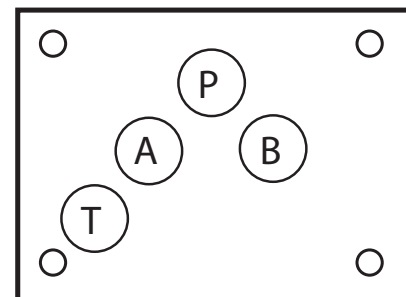
Open

## Valve Sizes

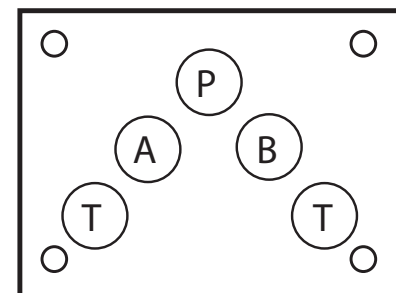
### D03



### D05



### D05 High Flow

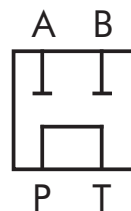


C.HYD.D5D.4W3P2

## 3 Position Directional Valve 4 Way (DO5)

- Four-Way Solenoid Tandem Directional Valve with 3 Positions
- Soft-Shift
- NFPA 2

### Center Position



Tandem

In a **three-position valve**, a center position is added that provides additional circuit operating characteristics.

# Hydraulic Accessories

## HYDRAULIC



C.HF.QDC.F.50E

### Female Quick Disconnect

- H&F Female Quick Disconnect with 0.50" NPT



C.HF.QDC.M.50E

### Male Quick Disconnect

- H&F Male Quick Disconnect with 0.50" NPT



C.HYD.OILGA.3

### Oil Level and Temperature Gauge 3"

- Front mount 3" Oil Level/ Temperature Site Gauge with Thermometer



C.HYD.SS.MT.10

### Suction Strainer 10 GPM

- 10 GPM Suction Strainer
- 1" Port Metal Fitting
- 100 Micron



C.HYD.SS.MT.20

### Suction Strainer 20 GPM

- 20 GPM Suction Strainer
- 1.25" Port Metal Fitting
- 100 Micron



C.HYD.OILGA.5

### Oil Level and Temperature Gauge 5"

- Front mount 5" Oil Level/ Temperature Site Gauge with Thermometer



C.HYD.RC2

### Delta Relief Cartridge

- 12 GPM Max Flow



C.HYD.CV.F50F

### Check Valve Cracking

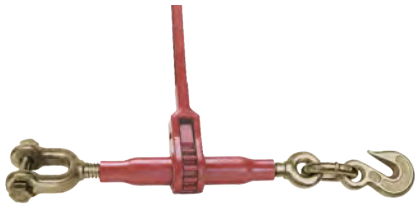
- 5 PSI/18 GPM with .5" NPT



C.HYD.CV.F75F

### Check Valve Cracking

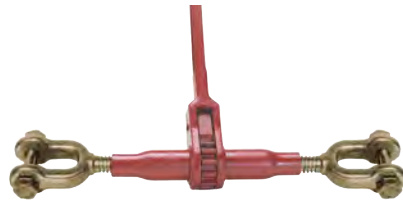
- 5 PSI/18 GPM with .75" NPT



R.RB.10.JH13

## 10" Jaw-Hook Ratchet Binder

- 10" Ratchet Binder with one Jaw and one Hook end
- 14" Handle
- 13,000 lbs. Load Bear Capacity
- 7/8" Screw diameter
- Use: Roll-Off



R.RB.10.JJ13

## 10" Jaw-Jaw Ratchet Binder

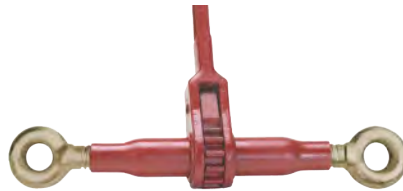
- 10" Ratchet binder with two Jaw ends
- 14" Handle
- 13,000 lbs. Load Bear Capacity
- 1" Screw diameter
- Use: Roll-Off/Self-Contain Compactor



R.RB.12.JJ28

## 12" Jaw-Jaw Ratchet Binder

- 12" Ratchet binder with two Jaw ends
- 24" Handle
- 28,000 lbs. Load Bear Capacity
- 1 3/8" Screw diameter
- Use: Stationary Compactor



R.RB.10.OO13

## 10" Eye-Eye Ratchet Binder

- 10" Ratchet binder with two eye ends
- 14" Handle
- 13,000 lbs. Load Bear Capacity
- 7/8" Screw diameter
- Use: Roll-Off/Self-Contain Compactor



R.HW.8.JJ28

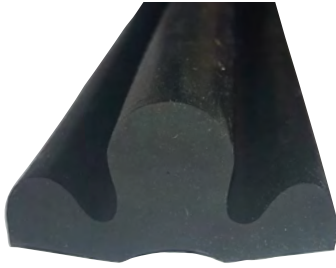
## 12" Turnbuckle Ratchet Binder

- 12" Ratchet binder with two Jaw ends
- 8" Wheel
- 28,000 lbs. Load Bear Capacity
- 1 3/8" Screw diameter
- Use: Balers



# Compactor Seals and Tracks

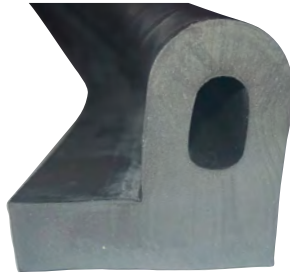
## STRUCTURAL



C.SEAL.T

### Compactor Door "T" Seal

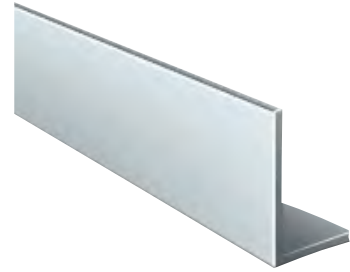
- 15'L X 1"W X 2"H Universal Compactor Foam Door Seal



C.SEAL.P

### Compactor Door "P" Seal

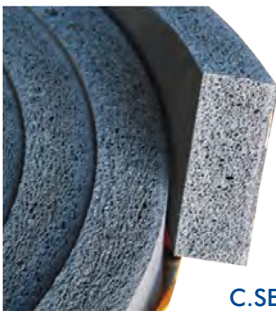
- 15' Rubber P-shaped Compactor Door Seal



C.MPH.RA.1-45

### Retaining Angle

- .75" x .5" x 45.25"
- 14GA Steel
- Requires 2 of each



C.SEAL.RT1

### Compactor Door Seal

- 20'L X 1"W X 2.5"H Universal Compactor Foam Door Seal



C.SEAL.RT1.TRK

### Track for Compactor Door Seal

- 92"L X 1"W X 2.5"H Track for Compactor Door Seal



C.MPH.RA.1-40

### Retaining Angle

- .75" x .5" x 40"
- 14GA Steel
- Requires 2 of each



C.HE

Compactor Lid Hinge Ears

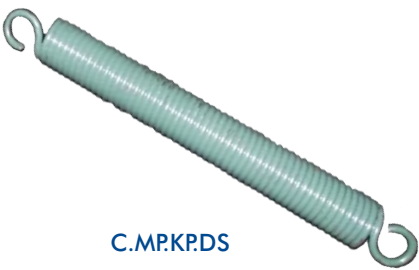
- Compactor Lid Hinge Ear



C.MPGL.DS

Galbreath Door Spring 9596

- Compactor Door Spring
- For Galbreath 6-Yard Pack-Man



C.MPKR.DS

K-PAC Door Spring

- Compactor Door Spring
- For K-Pac 6-Yard



Shoe Blades

- Cast Iron
- Short = 10" x 3" x 2"
- Long = 18" x 3" x 2"

| ITEM DESCRIPTION | ITEM CODE   |
|------------------|-------------|
| SHORT SHOE       | C.BLADESH.S |
| LONG SHOE        | C.BLADESH.L |



C.PADLTCH.HD

Heavy Duty Paddle Latch

- Locking Heavy Duty Paddle Latch
- Keys Included



Slam Latch

- Standard Duty Slam Latch
- Includes Handle
- Handle Only Available

| ITEM DESCRIPTION           | ITEM CODE    |
|----------------------------|--------------|
| SLAM LATCH<br>W/HANDLE     | C.SLAMLATCH  |
| REPLACEMENT<br>HANDLE ONLY | C.SLAMHANDLE |

# Compactor University



*Join us for an expert-led FREE 2 day compactor class! Offered quarterly.*

*We are committed to helping you succeed. That's why we offer FREE hands-on Compactor classes for beginning and advanced technicians.*

*You will come away with a clear understanding of how the parts of a compactor interact. A power unit will be assembled and disassembled.*

*You will take home troubleshooting and problem solving skills that will enable you to identify and fix problems out in the field.*

Name: \_\_\_\_\_ Company: \_\_\_\_\_

Email \_\_\_\_\_ Address: \_\_\_\_\_

Phone Number: \_\_\_\_\_ Best time to Call: \_\_\_\_\_

Current Position: \_\_\_\_\_ Supervisor Name: \_\_\_\_\_

Supervisor Email Address: \_\_\_\_\_ Supervisor Phone: \_\_\_\_\_

How much Compactor repair and maintenance experience do you have?

☐ 0-2 Years    ☐ 3-5 Years    ☐ 5+ Years

Are you able to read a basic hydraulic schematic?

☐ Yes    ☐ No

Are you able to read a basic electrical schematic?

☐ Yes    ☐ No

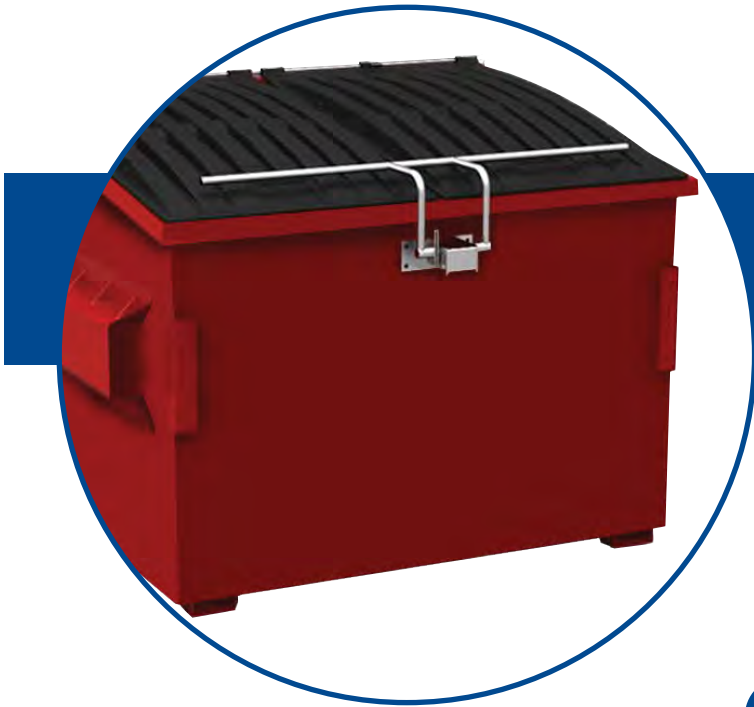
Do you have standard troubleshooting techniques?

☐ Yes    ☐ No

Please list any topics – field issues – take-aways you want covered

---

---



# *Container Parts*

*PRT has created a one-stop shop  
for all your container repair needs.*



## Stock Wheels



P.62PH

### 6 x 2" Phenolic Wheel

- Axle, bushing and roller bearing included
- Weight rating 1200 lbs./wheel
- Made in the U.S.A.



P.62MOR

### 6 x 2" Mold-On-Rubber Wheel

- Axle, bushing and roller bearing included
- Weight rating 400 lbs./wheel



P.62ST

### 6 x 2" Steel Wheel

- Axle, bushing and roller bearing included
- Weight rating 800 lbs./wheel



P.62PU

### 6 x 2" Poly-On-Steel Wheel

- Axle, bushing and roller bearing included
- Weight rating 1200 lbs./wheel
- Non-marking wheel

## Didn't find what you're looking for?

*Call us today.*

PRT can provide additional wheels and casters in 4" x 2", 5" x 2", and 8" x 2" sizes.

## Premier Plus+ Wheel



P.62CP

### 6 x 2" Premier Plus+ Wheel

- Axle and bushing included
- Weight rating 1000 lbs./wheel
- 1-Year Warranty confirmed by date stamp on wheel
- Also, available w/roller bearing (P.62CPRB)

## Here's why these are Premier Plus+



### Durable Design

The Premier Plus+ Caster forks are double-welded to provide added strength. The frame is also zinc-plated to prevent rusting.



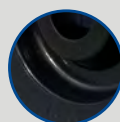
### Date Stamp for Warranty

PRT offers a full **1-Year Warranty** on our Premier Plus+ wheel, verified by a date-stamp on the product. Our customers refer to this wheel as bullet-proof and no warranty claims have ever been made.



### Easy Maintenance

A Zerk fitting is included on the wheel. This fitting is also included on the swivel frame to ensure proper ball bearing functionality.



### High Grade Material

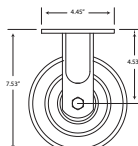
The Premier Plus+ Wheel is thermoformed from a virgin copolymer material. It is a solid plastic design and each wheel weight rating is 1,000 lbs.

# Stock Casters

## Casters, CAM Brake and Top Plate



P.62RG

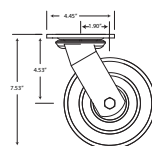


### 6 x 2" Rigid Caster

- Double-welded forks for strength
- Zinc-plated to prevent rust



P.62SW

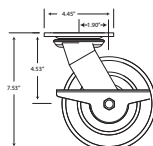


### 6 x 2" Swivel Caster

- Double-welded forks for strength
- Zinc-plated to prevent rust

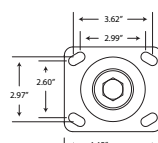


P.62BRK.CM



### CAM Brake

- Frame not included
- Can be used in conjunction with PRT swivel frame P.62SW



### 6 x 2" Caster Top Plate

| ITEM DESCRIPTION                           | ITEM CODE       |
|--|-----------------|
| 6X2 "D" WHEEL W/COMPONENTS                 | P.62CP          |
| 6X2 PHENOLIC WHEEL W/COMPONENTS            | P.62PH          |
| 6X2 MOR WHEEL W/COMPONENTS                 | P.62MOR         |
| 6X2 STEEL WHEEL W/COMPONENTS               | P.62ST          |
| 6X2 POLYURETHANE WHEEL W/COMPONENTS        | P.62PU          |
| 6X2 "D" WHEEL W/ROLLER BEARING COMP.       | P.62CPRB        |
| 6X2 RIGID FRAMES                           | P.62RG          |
| 6X2 SWIVEL FRAMES                          | P.62SW          |
| CAM BRAKES FOR CASTERS                     | P.62BRK.CM      |
| 6X2 "D" RIGID CASTERS                      | P.62CPRG        |
| 6X2 "D" SWIVEL CASTER                      | P.62CPSW        |
| 6X2 "D" SWIVEL CAST W/ROLL BER & CAM BRAKE | P.62CPRBSW.CMBK |
| 6X2 "D" SWIVEL CAST W/ROLL BEARING         | P.62CPRBSW      |
| 6X2 PHENOLIC RIGID CASTER                  | P.62PHRG        |
| 6X2 PHENOLIC SWIVEL CASTER                 | P.62PHSW        |
| 6X2 MOR RIGID CASTER                       | P.62MORRG       |
| 6X2 MOR SWIVEL CASTER                      | P.62MORSW       |
| 6X2 STEEL RIGID CASTER                     | P.62STRG        |
| 6X2 STEEL SWIVEL CASTER                    | P.62STSW        |
| 6X2 POLY ON STEEL RIGID CASTER             | P.62PURG        |
| 6X2 POLY ON STEEL SWIVEL CASTER            | P.62PUSW        |

## Customized Solutions How to Order Your casters

### 1. Select the Wheel



| Wheel Types          | Code |
|----------------------|------|
| Premier Plus+ Wheel  | CP   |
| Phenolic Wheel       | PH   |
| Mold-On-Rubber Wheel | MOR  |
| Steel Wheel          | ST   |
| Poly-On-Steel        | PU   |

### 2. Select the Caster



| Caster Types  | Code |
|---------------|------|
| Rigid Caster  | RG   |
| Swivel Caster | SW   |

### 3. Select Brake Option (Optional)

| Brake Options | Code  |
|---------------|-------|
| CAM Brake     | .CMBK |

### 4. Assemble the Product Code Number

P.62 Wheel Caster . Brake

EXAMPLE: For a Premier Plus+ Wheel with a swivel caster and a CAM brake, the code is:

P.62 CP SW . CMBK  
Wheel Caster Brake



# Caster Pads

## ***PRT Product Efficiency— The Quick Release Caster Pad***

PRT knows that there are never enough hands to complete all the work required of a secondary shop. PRT Quick Release Caster pads can save you time and money. These pads are designed to allow you to easily switch out caster wheels when they become worn or damaged. Avoid the time and labor cost of re-welding casters to your container with this fast and efficient option.



P.CP2



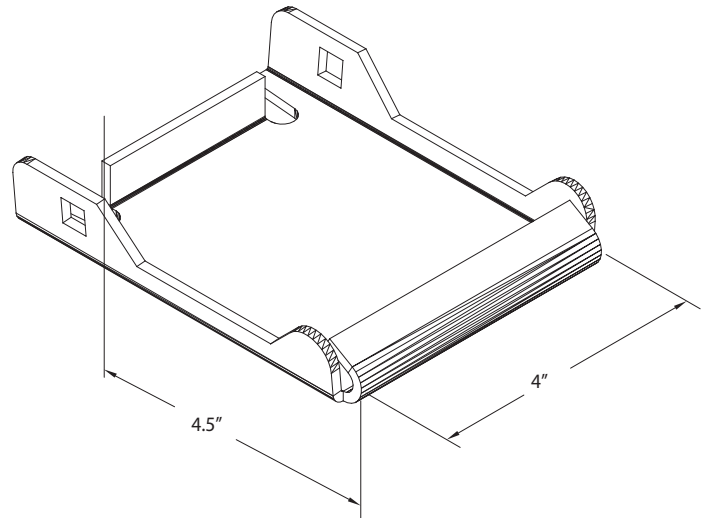
P.CPBOLT

### **4 x 4.5" Caster Pad**

- Carriage bolt and nylon lock nut included
- Made of 10 gauge steel
- Fits standard top plate casters

### **Carriage Bolt and Nylon Lock Nut for Casters**

- Nylon insert prevents loosening



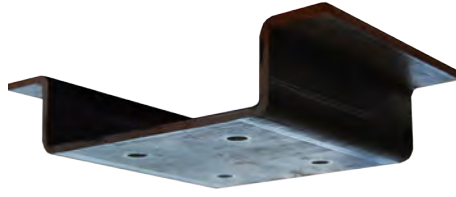
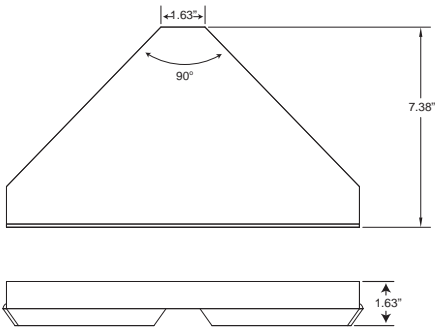
# Corner Bracket and Foot Pads



PC3B.7.99

## Corner Bracket

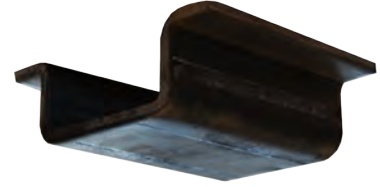
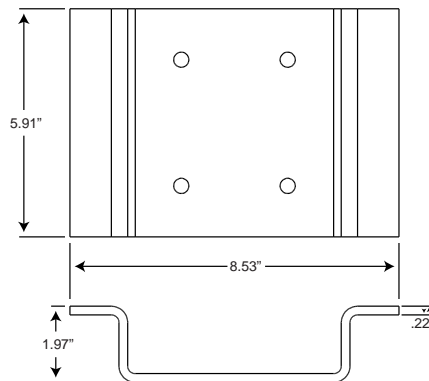
- 9.5" x 9.5" x 13"
- Two sides up with one down
- Fabricated from 3/16" steel for durability.



PFP2

## 6 x 6" Foot Pad

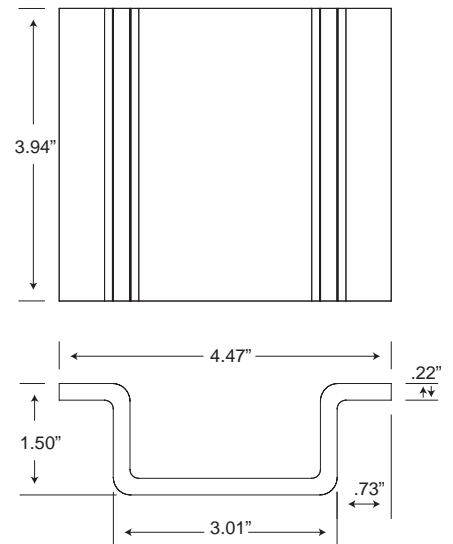
- Ground footprint 6 x 8.5"
- Fabricated from 1/4" steel for durability.



PFP1

## 4 x 4.5" Foot Pad

- Ground footprint 3 x 4"
- Fabricated from 1/4" steel for durability.



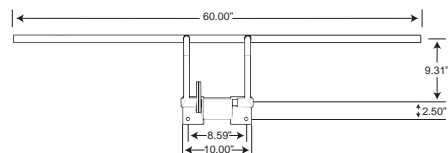
# Manual and Automatic Locks



P.LCKFM

## Front Mount Auto Lock

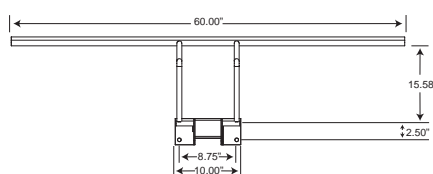
- Preassembled
- Bolt or weld attachment option



P.LCKFM.SLANT

## Front Mount Auto Lock Slope-Container

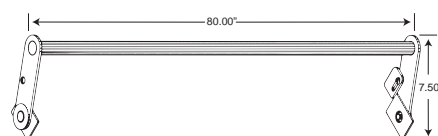
- Preassembled
- Bolt or weld attachment option



P.LOCK-KIT

## Manual Lock Kit

- 7 1/2" preassembled arms
- Universal kit for all front-load containers
- Lock bar pipe (shown below) sold separately.



P.CHAIN.316

## 3/16" Proof Coil Chain

- Zinc plated
- Cut to desired length



P.CHAIN.38

## 3/8" Proof Coil Chain

- Zinc plated
- Cut to desired length



P.LCKPIPE.80

## 80" Schedule 40 Lock-Bar Pipe

# Side Mount Cable Auto Lock

*This Side Mount Lock continues to let your customers secure their containers from unwanted waste and animals. At the same time, the gravity triggered release allows the driver to stay in the truck during the whole dumping process, without wasting precious time getting out of the truck to open the lock.*

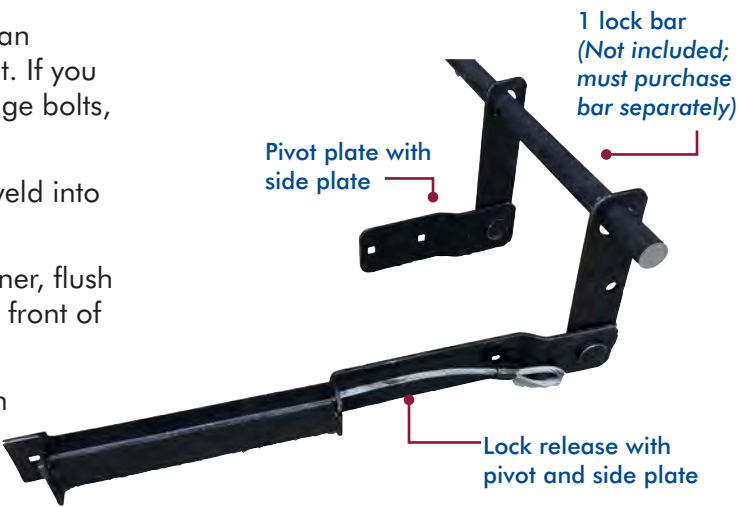


| Benefits for the Driver   | Benefits for the Customer   |
|---|---|
| Lift the can with the truck as usual. The lock opens and closes automatically during the normal dumping cycle without having to exit the truck. | The PRT lock is designed to be used with any standard padlock. The customer supplies their own padlock to lock the container while on the ground. To open the container, the customer removes the padlock, lowers the lock bar and opens the lids. To secure the container, simply put the padlock back on. |

## Installation instructions

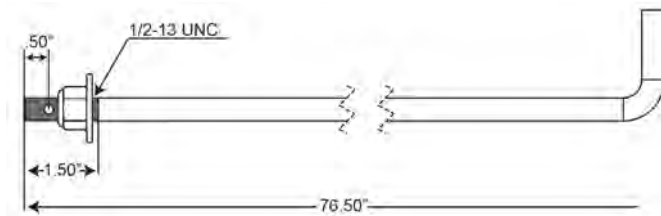
To install the lock, you will need two "C" clamps, an adjustable wrench, and a drill with a 3/8" drill bit. If you are bolting the lock on, you will need 3/8" carriage bolts, nuts and flat washers.

1. Insert lock bar into the two pivot plates and weld into place.)
2. Position lock release on left side of the container, flush with the top of the channel and even with the front of the lids. Clamp in place.
3. Position pivot plate on right of container, flush with the top of the channel and even with the front of the lids. Clamp in place.
4. Drill holes and bolt lock into place with carriage bolts.



| ITEM DESCRIPTION              | ITEM CODE   |
|-------------------------------|-------------|
| SIDE MOUNT CABLE AUTO LOCK    | PLCKSM      |
| 80" SCHEDULE 40 LOCK-BAR PIPE | PLCKPIPE.80 |

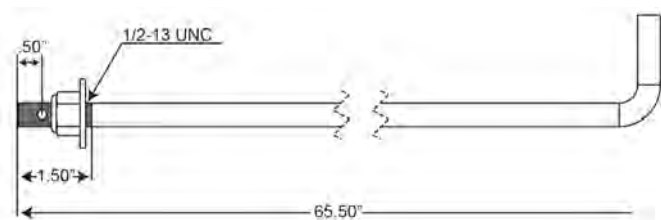
# Hinge Rods and Hinge Ears



P.HR.76.5

## 76.5" Universal Front-Load Hinge Rod

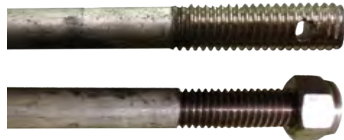
- 1/2" zinc-plated steel rod
- Straight end threaded
- Second end bent to 90°, 3" long
- Nut and washer included



P.HR.65.5

## 65.5" Universal Rear-Load Hinge Rod

- 1/2" zinc-plated steel rod
- Straight end threaded
- Second end bent to 90°, 3" long
- Nut and washer included



P.HR.76DT

## 76" Double Threaded Front-Load Hinge Rod

- 1/2" zinc-plated steel rod
- Both ends threaded
- Nut and washer included

# Container Accessories



P.LIFTEYE

## Lift Eye

- 3 3/8" W x 5 5/8" L Lift Eye
- Fabricated from 3/8" steel for durability



P.GUSSET.44

## 4" x 4" Gusset 3/16" thick

- Fabricated from 3/16" steel for durability.



P.GUSSET.44.25

## 4" x 4" Gusset 1/4" thick

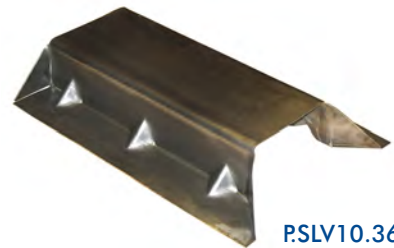
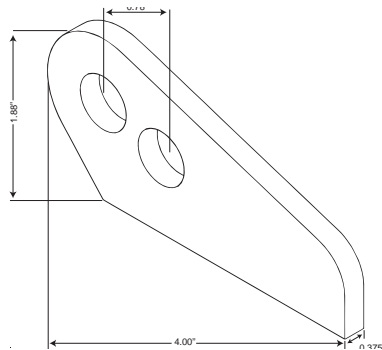
- Fabricated from 1/4" steel for durability.



P.HE1

## Dual-Hole Hinge Ear

- Two 9/16" diameter holes for two placement options.
- Made from 1/4" thick steel plate.



P.SLV10.36

## 36" Sleeve



# Drain Plugs and Flanges



## 1.5" Plastic Drain Plug

- Threaded to ensure good fit
- Also available 1"

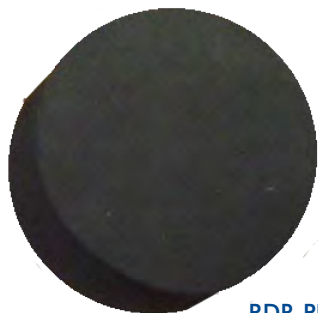
| ITEM DESCRIPTION        | ITEM CODE      |
|-------------------------|----------------|
| 1.5" PLASTIC DRAIN PLUG | PDR-PLG.PL-1.5 |
| 1" PLASTIC DRAIN PLUG   | PDR-PLG.PL-1   |



## 1.5" Steel Drain Flange

- Made to prevent damage during container stacking
- Designed for tight fit with plastic plugs
- Also available 1"

| ITEM DESCRIPTION        | ITEM CODE  |
|-------------------------|------------|
| 1.5" STEEL DRAIN FLANGE | PFLANGE1.5 |
| 1" STEEL DRAIN FLANGE   | PFLANGE1   |



PDR-PLG.CC-2

## Foam Drain Plug for 1.5" Holes

- Actual size 2" Diameter
- Made of closed-cell foam to prevent leaks



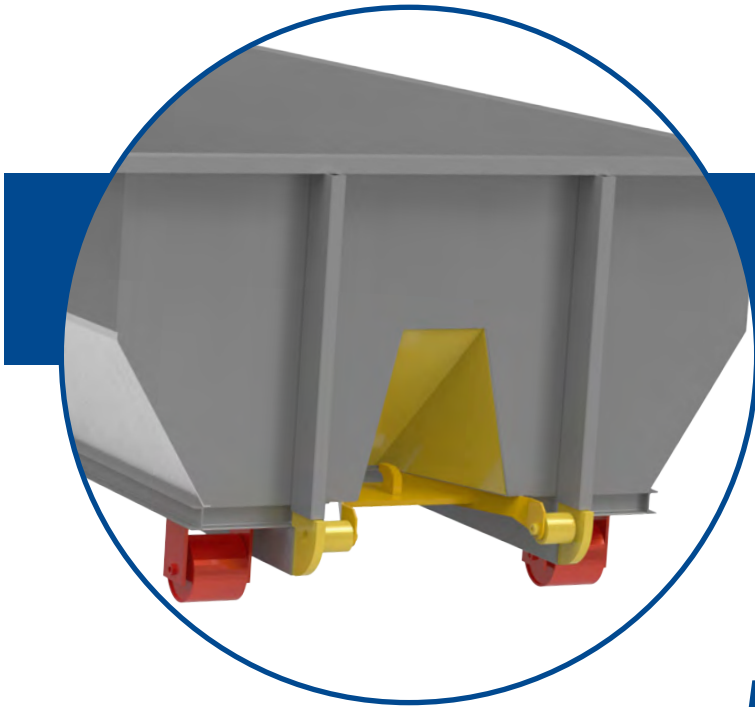
PDR-PLG.CC-2.5

## Foam Drain Plug for 1.5" Holes

- Actual size 2.5" Diameter
- Made of closed-cell foam to prevent leaks



All 1.5" Plugs fit our Stock Bottoms

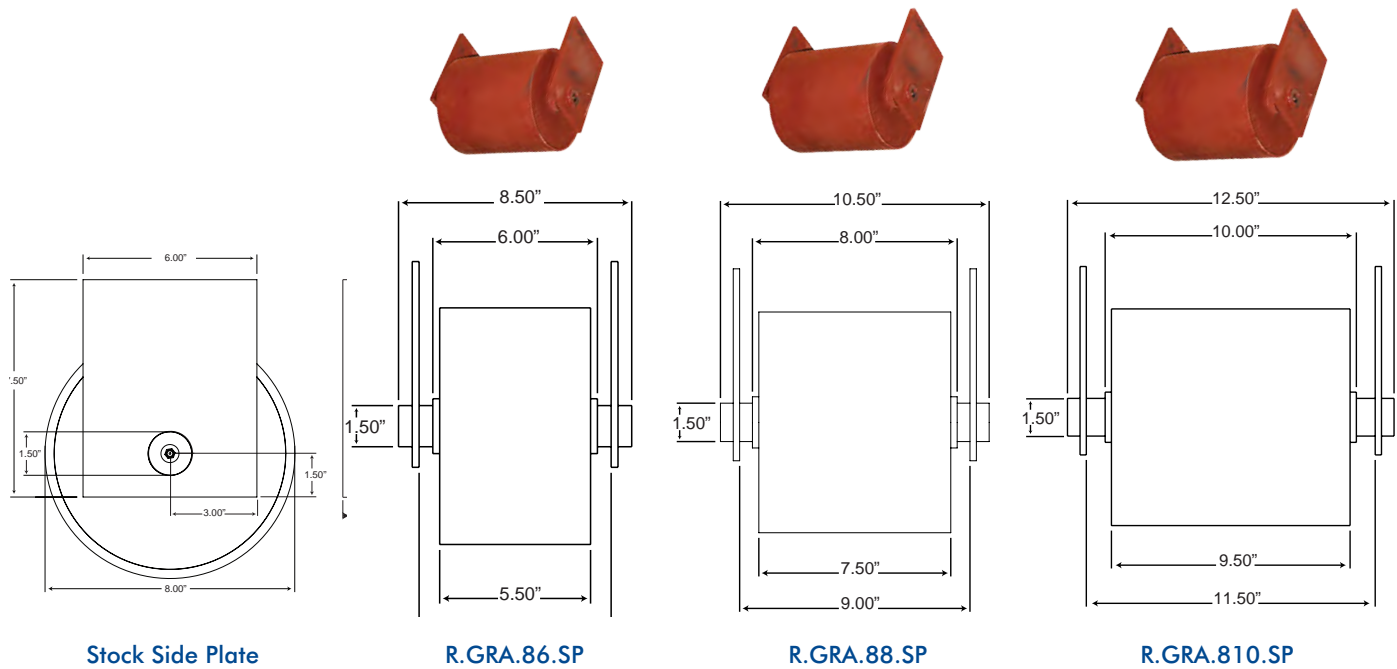
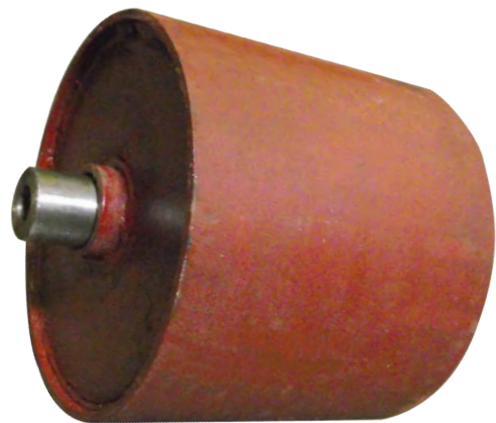


## *Roll-Off Parts*



# Ground Rollers and Side Plates

*PRT Ground Rollers feature a carbon steel axle with zerk fittings. The wheel is pre-assembled. 1/2" thick steel side plates are available.*



| ITEM DESCRIPTION                      | ITEM CODE    |
|---------------------------------------|--------------|
| 8 (DIAM) X 6 GROUND ROLLER W/AXLE     | R.GRA.86     |
| 8 (DIAM) X 6 GRA W/AXL & SIDE PLATES  | R.GRA.86.SP  |
| 8 (DIAM) X 8 GROUND ROLLER W/AXLE     | R.GRA.88     |
| 8 (DIAM) X 8 GRA W/AXL & SIDE PLATES  | R.GRA.88.SP  |
| 8 (DIAM) X 10 GROUND ROLLER W/AXLE    | R.GRA.810    |
| 8 (DIAM) X 10 GRA W/AXL & SIDE PLATES | R.GRA.810.SP |
| 10 (DIAM) X 8 GROUND ROLLER W/AXLE    | R.GRA.108    |

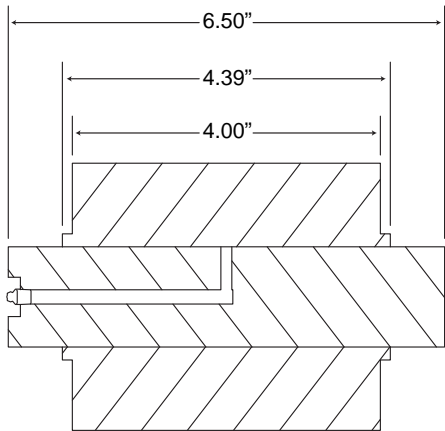
# Nose Rollers and Accessories



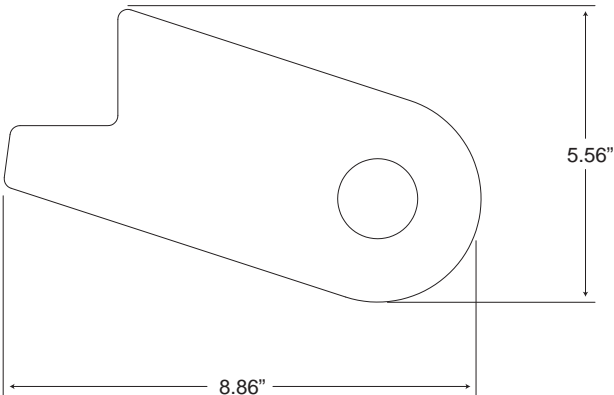
PRT Nose Rollers are made of solid cast iron for maximum durability and are 4" in diameter. We also use 1" thick steel for our Bull Nose and 1/2" thick steel for our Nose Roller Brackets, increasing product longevity.



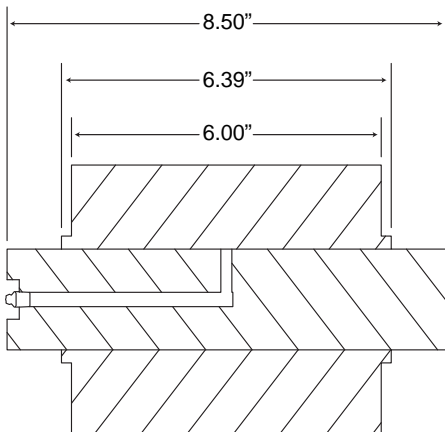
4" Nose Roller



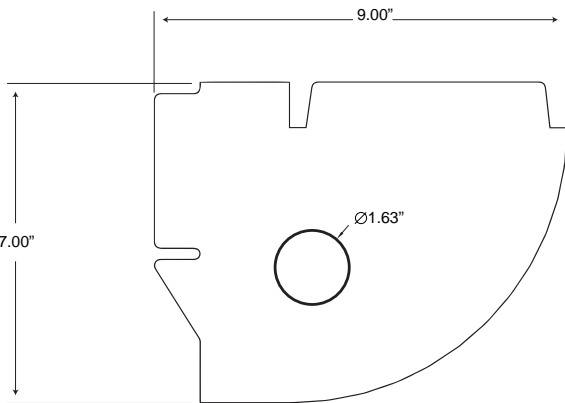
Nose Roller Bracket



6" Nose Roller



Roll-Off Bull Nose



| ITEM DESCRIPTION             | ITEM CODE     |
|------------------------------|---------------|
| 4" W NOSE ROLLER             | R.NRA.44      |
| 4" W NOSE ROLLER SOLID STEEL | R.NRA.44SS    |
| 6" W NOSE ROLLER             | R.NRA.46      |
| 6" W NOSE ROLLER SOLID STEEL | R.NRA.46SS    |
| NOSE ROLLER BRACKET          | R.NRA.BRACKET |
| ROLL-OFF BULL NOSE           | R.BN.W        |

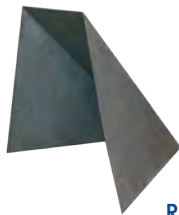
# Roll-Off Metal Repair and Lift Replacement

## Roll-Off Metal Repair



### Double Roll-Off Channel

| ITEM DESCRIPTION      | ITEM CODE |
|-----------------------|-----------|
| 3" X 5.75" X 3" X 12" | R.CHNL.12 |
| 3" X 5.75" X 3" X 96" | R.CHNL.96 |



R.DH

### Dog House

- 22"L X 12"W X 22"H Hold
- Made from 11-gauge steel
- Other sizes available

## Roll-Off Door



R.HINGE

### Roll-Off Hinge

- Complete assembly includes hinge pin

## Roll-Off Lift Replacement



R.HOOKLIFTDD

### Dead Hook Lift

- Hook lift only

+



R.HOOKPIN

### Dead Hook Pin

- Dead lift safety and pin only

=



K.HOOKLIFTDD.PIN

### Complete Dead Hook Lift and Pin Kit

- Dead Hook lift
- Dead Hook safety and pin



R.HOOKASMBLY

### Hook Plate Assembly

- Assembled Roll-Off hook and pull plate with long nose roller bracket
- 1.25" thick plate and hook for heavy load capacity

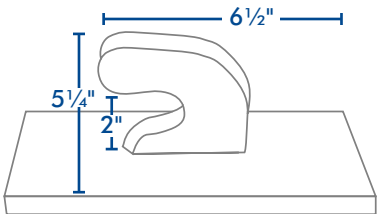


R.HOOKPULLPL

### Hook With Pull Plate

- 1 3/8" thick plate and hook for heavy load capacity.
- 6" x 15" plate

### Take A Closer Look





## *Roll-Off Hoist Parts*

*Roll-Off Hoist Parts is our newest product line. We listen to our customers and heard they want high quality parts without high proprietary prices. PRT stands behind every part we sell and we take pride on finding the best solutions for you.*





# Rollers

## Complete Hoist Roller Assembly



T.GB.386AO

### 3" Roller Assembly with Pin

- Includes Roller, Roller Pin, Washer, Cotter Pin



T.GB.381AO

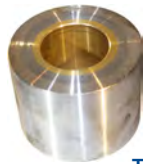
### 4" Roller Assembly with Pin

- Includes Roller, Roller Pin, Washer, Cotter Pin

**Make it Easy!**  
**Order your Hoist Roller Assembled**

Assembly includes  
Roller, Roller Pin,  
Washer, Cotter Pin

## Hoist Rollers



T.GB.521AO

### 3" x 4" Side Roller Only

- For 386AO



T.GB.522AO

### 4" x 4" Side Roller Only

- For 381AO



T.AM.505-1107

### 4" x 4.5" Hoist Roller

- For 2.5" Pin

## Hoist Roller Pin



T.GB.2185W

### Pin for 3" Side Roller

- For 386AO



T.GB.1746W

### Pin for 4" Side Roller

- For 381AO

## Hoist Roller Washer & Cotter Pin



T.GB.E660

### Washer for Side Roller

- For 381AO or 386AO



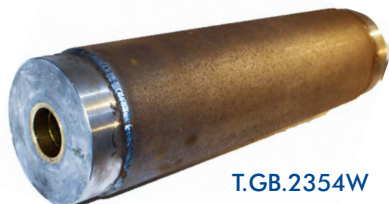
T.GB.38KP-300

### Cotter Pin for Side Roller

- For 381AO or 386AO

## Rollers and Accessories

### *Rear Hoist Tail Roller, Pin and Bracket*



T.GB.2354W

#### **Rear Roller**

- 6.625" Diameter x 23" Length



T.GB.A961

#### **Rear Roller Shaft**

- 2" OD x 27.5" Length



T.GB.A714

#### **C-Clip for Rear Roller Shaft**

- 2" H x 3.25" W x 3.25" D

### *Lock Spring*



T.GB.3134

#### **Container Lock Spring**

**PRT does stocked parts  
better than anyone else.**

As we continue to grow our Roll-Off Hoist Product Line, we will always listen to our customers and find universal solutions to meet your needs.

## Sheave Accessories



T.GB.6934AO

### 2" ID Pin Sheave

- 10" Diameter 7/8 Wire
- Use with 2" Sheave Shaft  
T.GB.288-PIN

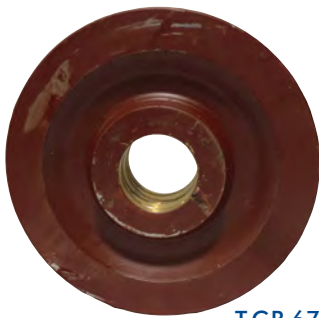


T.GB.288-PIN

### 2" Sheave Shaft Steel Center

- 2" x 5"
- With Zerk Fitting

**Look for our  
Winch Line  
Coming soon!**



T.GB.6727AO

### 2.5" ID Pin Sheave

- 10" Diameter 7/8 Wire
- Use with 2.5" Sheave Shaft  
T.GB.F825



T.GB.F825

### 2.5" Sheave Shaft Cable Guide



T.GB.2316W

### Sheave Block Assembly

- Poly Fender End Section

## Truck Seals



T.SEAL.1108689

### McNeilus Seal

- 161" Long
- 2.5" X 1.625"
- PRF ASL



T.SEAL.1109688

### McNeilus Seal

- 182" Long
- 1.75" X 1.895"
- PRF FL



T.SEAL.1108689



T.SEAL.1109688

### McNeilus Seal

- 200" Long
- 2.0" X 1.75"
- PRF RL

### Heil HP Tailgate Seal

- 20' L X 1" W X 2.5 "H
- Universal Foam Door Seal
- Heil - 022-3509

## We're just getting started!

*Our Roll-Off Hoist Replacement Parts Product Line  
is still growing!*

*We look for universal solutions and stock  
the most common parts.*

*I need an exact  
match for this part,  
where do I get one?*

# Have Questions?

**(888)999-5278**

## Ask a Technician!



*PRT provides FREE phone access to compactor and hoist technicians who need solutions while in the field.*

*Our technicians can help you:*

- *Cross Reference manufacturer parts/numbers*
- *Troubleshoot in-field repairs and emergencies*
- *Answer equipment questions*
- *Give advice on savings opportunities and cost effective alternatives*



# im·prove·ment


a thing that makes something better

*That thing is you! We believe feedback is important. It is how we continually improve our service, our business and our products. By listening to the needs of our customers, we have developed universal solutions, and raised the bar on high-quality, yet affordable, replacement parts.*

*We know our customers work hard and we want our products to work just as hard for you. We rely on your feedback and ideas to continually improve.*

*Here for you!*

*Please contact us and share your ideas:*

 (888) 999-5278

 [cs@prtlids.com](mailto:cs@prtlids.com)

 PRT (Plastic Recovery Technology)



*For over 25 years PRT has been partnering with our customers to listen first and then collaborate on strategic problem solving initiatives that either improve quality, equipment, processes, or save precious time and costs.*

*We identify what may seem like a unique problem to you, but we have the benefit of partnering with customers just like you, all over the country. We develop universal solutions that help to standardize the replacement parts industry and maximize the life of your equipment. All built to last.*

*Today, we are a one-stop shop for all your Container Shop replacement part needs.*



**Collaborative Engineering  
Trusted Partnership  
Here for You**